

CATALOG  
**ROLLER SHUTTERS**  
PORTOS



2026

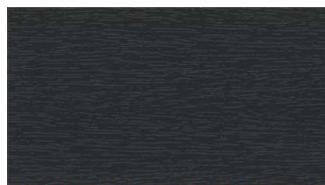
# COLOURS OF VENEER



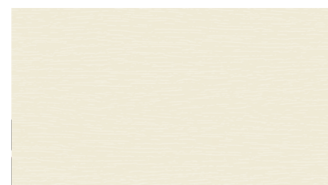
10 - Plain anthracite  
(nr KDB74-F7)



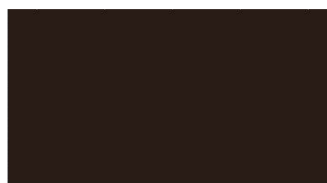
11 - Palisander\*  
(nr H-426-5010)



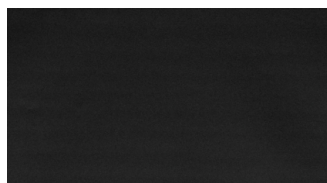
12 - Anthracite  
(nr KDB74-Z8)



14 - Creamy white\*  
(nr H-456-5015)



17 - Chocolate\*  
(nr H-426-5011)



18 - Black Ulti-Matt  
(nr 000002-504700)



22 - Mahogany  
(nr UR601-U4)



30 - Walnut  
(nr UK103-Z8)



34 - Bog oak  
(nr H-436-2007)



38 Dark oak\*\*  
(nr H-426-2046)



42 - Woodec turner oak\*  
(nr 385308070001)



48 - Golden oak  
(nr UK101-Z8)



53 - Siena noce\*\*  
(nr 49237)



54 - Winchester  
(nr 49240)



55 - sheffield oak\*  
(nr 456-3081)



61 - Grey quartz\*  
(nr KADF8-Z8)



62 - Basalt grey\*  
(nr KADF9-Z8)



63 - Plain basalt grey\*  
(nr KADF9-F7)



66 - Green\*  
(nr H-426-5021)



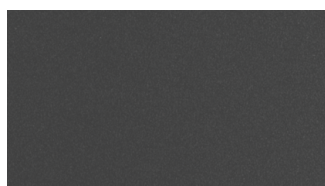
94 - Light grey  
(nr KACH7-Z8)



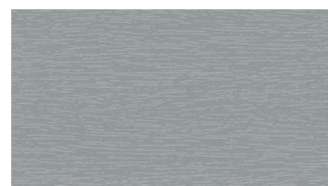
95 - Brushed aluminium\*  
(nr DJ606-42)



96 - Light silver\*\*  
(nr SS101-89)



97 - grafit metallic  
(nr D2573-F7)



99 - Dark grey  
(nr KACV8-Z8)

NOTE - the colour samples presented above can to some extent vary from the actual colours.

\* - Completion date up to 15 business days.

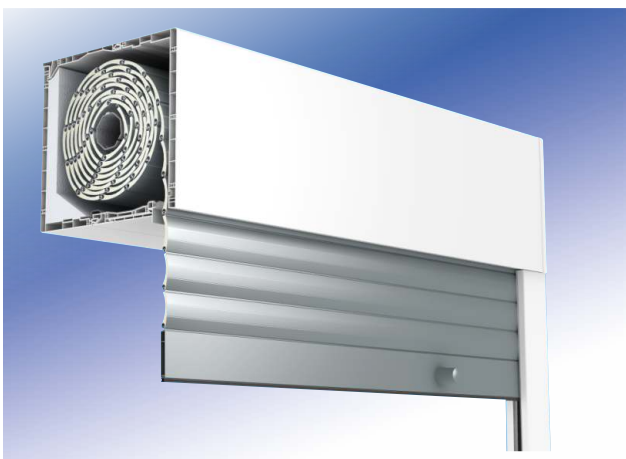
\*\* - Product available until in stock (individual pricing).

For the MX1200 system, the standard lead time includes the following veneers: 10, 12, 18, 48.  
For the SN5000 system, the standard lead time includes the following veneers: 10, 12.



# TOP MOUNTED ROLLER SHUTTERS

CC1000®



TL1000®



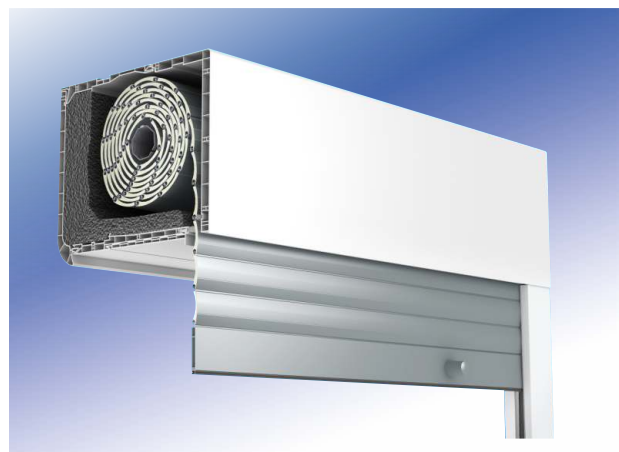
TP1000K®



TP1000K®  
with mosquito net



MX1200®



SN5000®  
BEZ/Z MOSKITIERĄ





## HOW TO FILL IN AN ORDER FOR PORTOS TOP MOUNTED ROLLER SHUTTERS - CC1000, TL1000, TP1000K WITH A MOSQUITO NET

1. Please provide the type of a window profile to select proper adjustment options - if you fail to specify, the window profile, we will deliver a UNIVERSAL adapter. In case of the TP1000K system, please mark a relevant adjustable profile with an "X" sign. If none of the options is marked, the NPS-010 adjustable profile is deemed to be ordered.
2. Provide the number and date of order filing and the requested date of delivery.
3. If the delivery address is different than the company address, fill in such other address.
4. The order concerns the CC1000 shutters, when ordering the TL1000, TP1000K, TP1000K shutters with a MOSQUITO NET, please mark a relevant field in the order form with an "X" sign

1	2	3	4	5	6	7	8	9	10	11	12	13	14	15	16	17	18	19	20	21	22	23	24	25	26	27
Shutter size (cm) (with the box and guide rails)	width of the mosquito net only for TP1000K (division)	width of the mosquito net only for TP1000K (division)	box size (mm)	box elevation (only for TP1000K-ZF)	box lowering (only for TP1000K-ZF)	box depth increase (only for TP1000K-ZF)	tape outlet, A, B or C Cardan shaft outlet (only for TP1000K-ZF) (Fig. 1, 3)	types of guide rails (PC/ALU, steel/inox) (ALU only for TP1000K-ZF) (Fig. 1, 3)	cutting angle of PVC guide rails from 0 to 45° does not apply to TP1000K-ZF	location of the revision (inspection) cover (A or B only for TP1000K-ZF) (Fig. 2)	Box colour		colour of the revision (inspection) cover (only for TP1000K-ZF) (Fig. 2)	colour of the guide rails	type of the shutter profile / slats	colour of the shutter profile/slat as per the colour chart	MOSQUITO NET		colour of the bottom net	colour of the bottom slat	DRIVE			OPERATION (looking from the inside)	Colour of the plastering strip (TL1000, TP1000K)	Notes: e.g. colour of the winder, tape, additional elements: bolts, switches, remote controls, end caps
											internal	external					manual	crank with a winder (Cardan shaft)			crank + lock + handles	motor	L			

1. Width of the installed shutters (total width) with guide rails is specified in centimetres
2. Height of the installed shutters (total height with the box) is specified in centimetres, in the TP1000K-ZF system, the height is specified with the box expansion (method of measuring the blinds - page 3, 19)
3. Specify the width and distribution of mosquito nets - applies to the TP1000K system with the shutter curtain profiles - one whole or divided mosquito nets. The dimensions shall be specified via measuring the distance from the external edge to the divider rail axis and/or between the axes of divider rails. Height of the mosquito net equals the height of the shutters.
4. Height of the box in millimetres, selected as per the table with winders. The box can be expanded for a surcharge of 5% of the net price of the shutters, if the box size is not specified, standard size as per the table with winders will be assumed. If the TP1000K-ZF system is ordered with the 280 box (actual dimension 281 mm), then the box is in fact the 250 box with the 31 mm expansion.
5. box elevation (expansion) (only the TP1000K-ZF shutters in boxes) - please mark with an 'X' sign. Box elevation increases the height of the box by 3 cm.
6. box lowering (only the TP1000K-ZF shutters in boxes) - please mark with an 'X' sign. Box lowering does not increase the height of the box.
7. specify the box depth increase - +31 mm or +62 mm (concerns only TP1000K).
8. Tape outlet, enter A, B or C (concerns only TP1000K see Fig. 1, table of orders) and Cardan shaft outlet enter A, B (concerns only TP1000K see Fig. 3). In the TP1000K-ZF system, the only available Cardan shaft outlet option is B
9. specify the shutter curtain profile guide rails type - enter SIN (single), DOU (double) or S/DB (single+double). In the TP1000K-ZF system, aluminium guide rails can be used. If you want aluminium guide rails, then fill in as follows ALU-SIN (aluminium, single), ALU-DOU (aluminium, double) or ALU-S/DB (aluminium single+double)
10. enter the angle of the PVC guide rail cutting from 0 - 45°
11. manner of the revision (inspection) cover opening, enter A or B (concerns only TP1000K see Fig. 2 order table)
12. colours (boxes): int - internal, ext - external.

Available colours: white - 02, lining (colours of lining - cover), CC1000 - if a white box 02 is ordered and lined guide rails, the external side of the shutters will be smooth and white. Assuming the colours as above, and additionally with the option of the plastering strip, the external side of the blinds will be grooved, and will be provided at the bottom with a 1.5 cm strip of the same colour

- as the guide rails (135 mm box will make an exception - the external side will be smooth and provided at the bottom with a 1.5 cm strip with lining).
- TL1000, TP1000K - if a white box 02 is ordered and lined guide rails or revision (inspection) cover, external or internal side of the blinds will be provided at the bottom with a 1.5 cm strip with lining of the same colour.
- This type of lining can be used in the TL1000 system only for grooved sides. TL1000K offers more options, here this type of lining can be used for smooth and grooved sides.
- Grooved sides for CC1000, TL1000, TP1000K systems are not available in full lining.

13. colour of the revision (inspection) cover (concerns only TL1000). Available colours: white - 02, lining - please refer to the cover. For the TP1000K-ZF box, the colour of the inner bottom part of the box shall be specified. If the colour is not specified, then the colour 02 - white will be assumed.

14. colours (guide rails): white - 02, lined (colours of lining - please refer to the cover)
15. enter the selected profile: PA - 39 (aluminium profile), PA - 45 (aluminium profile), PA - 52 (aluminium profile) (PA - 52 and PVC - 52 are only available in the TP1000K system - see tables with winders)
16. colour designation of PA - 39, PA - 45 profile (as per the colour chart on the last page, cover) (if the profile is to be free of any perforations, instead of the 'X' sign, enter 1, e.g. 02 - white perforated, 102 - white, with no perforations)

### Note! - profile with no perforations is typically used in case of coil spring lifting mechanism

17. colour of the bottom slat:
  - 01 - silver, 02 - white, 03 - grey, 05 - beige, 07 - light grey, 08 - dark brown, 09 - brown, 16 - ivory, 20 - black, 23 - anthracite grey (standard, with no additional fees)
  - other varnish colours similar to the colour of the shutter curtain profile shall be specified using the profile colour symbol (apart from colours 22, 30, 48, 54) also non-standard colours as per RAL colour table,
  - bottom slat can also be lined (see the list of lining colours - cover),

18. net colours (concerns the mosquito net) - 03 - grey and 20 - black,

19. colour of the bottom slat (concerns the mosquito net) - 01 - silver, 02 - white, 03 - grey, 05 - beige, 07 - light grey, 08 - dark brown, 09 - brown, 16 - ivory, 20 - black, 23 - anthracite grey (standard, with no additional fees)

20. selection of the motor drive (mark with an 'X' sign in the column of the motor drive selected):

tape winder mechanism (no extra fee) - available in white, brown, anthracite grey - if the winder colour is not specified, then white will be assumed as a standard, with a grey tape. In case of shutters with a box with double-sided lining, and in case of the TL1000 shutters with lined revision (inspection) cover, the tape and the winder are brown as a standard.

21. box with the tape crank gear - available in white and brown, if the box colour is not specified, then white will be assumed as a standard, with a grey tape. In case of shutters with a box with double-sided lining, and in case of the TL1000 shutters with lined revision (inspection) cover, the tape crank gear and the tape are brown as a standard,

22. A Cardan gear mechanism 90 0 - crank extension - see Fig. 3

23. coil spring lifting mechanism and espagnolet lock in the bottom slat,

24. electric drive (if the motor is not specified - cable PORTOS motor will be assumed as a standard, in the TP1000K-ZF system - ELERO SOFT motor),

25. side of the tape winder location (box, crank and switch) looking from the inside,

26. in the TL1000 and TP1000K systems, the side where the plastering strip is to be fixed shall be selected - ext. /int. Please, mark the colour: 02 - white, 08 - dark brown, 09 - brown, 23 - anthracite grey. In case of the TP1000K-ZF system, the following colours are available: DB 703 - metallic grey, 7016 - anthracite grey, 7021 - dark grey, 7035 - light grey, 9005 - black, 9006 - white aluminium, 9007 - grey aluminium, 9016 - white, VSR 240 - beige, VSR 780 - olive. In the CC1000 system, the plastering strip is installed only on the external side. If the client has selected the plastering strip, the box will come with frontal reinforcement. In the TP1000K system, frontal box reinforcement is installed only on the external side.

27. Notes to respective items, e.g. colour of the winder and the tape, additional fit-out, e.g. bolts, etc. Drawings of sets and sketches (all from the inside). Notes can be also made under the table.

# CC1000<sup>®</sup>

## PA-39, PA-45 – aluminium profile 39mm and 45mm (including end caps)

BOX SIZE	width 0,35 - 2m, max. surface 6,5m <sup>2</sup>			width 0,35 - 2,5m, max. surface 6,5m <sup>2</sup>			width 0,35 - 3m, max. surface 6,5m <sup>2</sup>		
	Maximum height of shutter(including the box size)/cm			Maximum height of shutter(including the box size)/cm			Maximum height of shutter(including the box size)/cm		
	with automatic bolt (including the box size)/cm	with blocking hanger (including the box size)/cm		with automatic bolt (including the box size)/cm	with blocking hanger (including the box size)/cm		with automatic bolt (including the box size)/cm	with blocking hanger (including the box size)/cm	
<b>PVC</b>	<b>PA-39</b> ø 40+PZ50	<b>PA-39</b> ø 40-rygiel	<b>PA-39</b> ø 40-WB.	<b>PA-39</b> ø 60+PZ70	<b>PA-39</b> ø 60-rygiel	<b>PA-39</b> ø 60-WB	<b>PA-45</b> ø 60+PZ70	<b>PA-45</b> ø 60-rygiel	<b>PA-45</b> ø 60-WB
<b>PSK-135</b> Size 135 mm	136	132	116	118*	X	X	X	X	
<b>PSK-160</b> Size 160 mm	202	198	202	194	190	163	138	129	
<b>PSK-200</b> Size 200 mm	319	319	311	311	307	272	241	219	

\* - There is no possibility of assembling a motor with NHK (emergency han crank) in case size 135 mm.

**Note!** If the width of roller shutter exceeds 2m, pipe ø 60 is recommended.  
PZ- expansion ring from ø 40 on ø 50 or from ø 60 on ø 70.

### STANDARD

<b>Curtain</b>	Available colours for PA 39 (except for the steel anthracite DB703 (24), woodec turner oak(42)), PA 45 (except for the woodec turner oak(42)) – no additional charge
<b>Bottom lath</b>	silver (01), white (02), grey (03), light beige (05), light grey(07), dark brown (08), light brown (09), ivory (16), black(20), anthracite (23) Bottom lath buffer Veneering of bottom lath - Veneer Colour Chart and turnaround times – see page 2 (except for color 42 woodec turner oak)
<b>Tape roller</b>	Possible length for white or brown colour -5mb (up to 240 cm height, up to 12kg)
<b>SUB RKZ66</b>	Steel side handles
<b>End caps of the guides</b>	1At a 5 degrees angle – charge free (according to the customer's wish)
<b>Cutting guides under an angle</b>	Charge free – according to the customer's wish

### FOR ADDITIONAL CHARGE

<b>Curtain</b>	PA 39 steel anthracite DB703 (24), woodec turner oak (42), PA45 woodec turner oak only (42)	5%
<b>Shutter box</b>	Enlargement of the shutter box	5%
<b>Bottom lath</b>	Powder coated: dark beige(04), green(13), cream white(15), bordoux(19), steel olive(26), basalt grey (27) Powder coated: according to RAL Colour Chart Veneering of the bottom lath (color 42 woodec turner oak only) *	5% 10% 5%
<b>Guide</b>	Veneering of the guide - Veneer Colour Chart and turnaround times – see page 2 Guide extension - white Guide extension - veneered	8% 7,60€/rm 9,40€/rm
<b>Tape roller 11m</b>	Refers to roller shutters exceeding 240cm (according to the customer's wish – white or brown)	7,60€/pc.
<b>WSP RA-10</b>	Steel case reinforcement (exceeding 2m)	8,60€/rm
<b>PURS</b>	PURS 10 x 2mm x 12,5mb expansion tape	7,90€/pc.
<b>External concealed lath</b>	Colours: white (LT-02), light brown (LT-09), dark brown (LT-08), anthracite (LT-23)	3,50€/rm
<b>Case widening &lt; 5,5 cm</b>	The service of the roller shutter case widening up to 5,5cm (side of the case made of white, 5mm-thick plexi)	30,20€/pc.
<b>Case widening ≥ 5,5 cm</b>	The service of the roller shutter case widening from 5,5cm	30,20€/pc.

\* - Completion date up to 15 business days.

# TL1000®

## PA-39 and PA-45 curtain (including profile plugs)

Type of the box	width 0.35 - 2 m, max. area 6.5 m <sup>2</sup>			width 0.35 - 2.5 m, max. area 6.5 m <sup>2</sup>			width 0.35 - 3 m, max. area 6,5 m <sup>2</sup>		
	Max. height of the shutter with box			Max. height of the shutter with box			Max. height of the shutter with box		
		with the use of automatic bolt (cm)	with the use of the blocking bracket (cm)		with the use of automatic bolt (cm)	with the use of the blocking bracket (cm)		with the use of automatic bolt (cm)	with the use of the blocking bracket (cm)
PVC	PA-39 ø 40+PZ50	PA-39 ø 40-rygiel	PA-39 ø 40-WB.	PA-39 ø 60+PZ70	PA-39 ø 60-rygiel	PA-39 ø 60-WB	PA-45 ø 60+PZ70	PA-45 ø 60-rygiel	PA-45 ø 60-WB
160 mm	202	198	202	194	190	156	138		129
200 mm	319	319	311	311	307	272	241		219
200 mm+stabilizing console	300	300	311	311	307	272	241		219
200 mm+stabilizing console	210	210	214	195	195	199	167		153

**Note!** With the shutter width of more than 2 m, use ø 60. In addition, the box reinforcement - WSP is recommended for a width of more than 2 m. When using the reinforcement, values given in the tables should be reduced by 20 cm. For each shutter it is recommended to include SKM mounting anchors counting 40 cm from the side of the box, each subsequent anchor is installed every 50 cm. For shutters with a width of more than 1.80 m it is advisable to include stabilizing consoles. When using a stabilizing console, it is necessary to decrease the values given in the recommended box sizes: at the width of 0 - 2m - by 30 cm, width of 2.01-2.5m - by 40 cm, width of 3m and max. area of 6.5 m<sup>2</sup> - by 30 cm (concerns box 160 mm, box 200 acc. table above). PZ - expansion ring from ø 40 to ø 50 or from ø 60 to ø 70.

### STANDARD

<b>Curtain</b>	Available colours for PA 39 (except for the steel anthracite DB703 (24), woodec turner oak(42)), PA 45 (except for the woodec turner oak(42)) – no additional charge
<b>Bottom lath</b>	silver (01), white (02), grey (03), light beige (05), light grey(07), dark brown (08), light brown (09), ivory (16), black(20), anthracite (23) Bottom lath buffer Veneering of bottom lath - Veneer Colour Chart and turnaround times – see page 2 (except for color 42 woodec turner oak)
<b>Tape roller</b>	Possible length for white or brown colour -5mb (up to 240 cm height, up to 12kg)
<b>SUB RKZ66</b>	Steel side handles
<b>End caps of the guides</b>	At a 5 degrees angle – charge free (according to the customer's wish)
<b>Cutting guides under an angle</b>	Charge free – according to the customer's wish

### FOR ADDITIONAL CHARGE

<b>Curtain</b>	PA 39 steel anthracite DB703 (24), woodec turner oak (42), PA45 woodec turner oak (42)	5%
<b>Shutter box</b>	Enlargement of the shutter box	5%
<b>Inspection hatch</b>	Veneering of the inspection hatch– Veneer Colour Chart and turnaround times – see page 2	3%
<b>Bottom lath</b>	Powder coated: dark beige(04), green(13), cream white (15), bordoux(19), steel olive(26), basalt grey (27)	5%
	Powder coated: according to RAL Colour Chart	10%
	Veneering of the bottom lath (color 42 woodec turner oak only) *	5%
<b>Guide</b>	Veneering of the guides – Veneer Colour Chart and turnaround times – see page 2	8%
	Guide extension - white	7,60€/rm
	Guide extension - veneered	9,40€/rm
<b>Tape roller 11m</b>	Refers to roller shutters exceeding 240cm (according to the customer's wish – white or brown)	7,60€/pc.
<b>WSP RA-10</b>	Steel case reinforcement (exceeding 2m)	8,60€/pc.
<b>PURS</b>	PURS 10 x 2mm x 12,5mb expansion tape	7,90€/pc.
<b>KNS - 160</b>	Stabilizing console for shutter box 160	18,10€/pc.
<b>KNS - 200</b>	Stabilizing console for shutter box 200	18,10€/pc.
<b>KNS - WSP - 160</b>	Stabilizing console for a shutter box 160, when WSP is used	18,10€/pc.
<b>KNSK - 200 WSP</b>	Stabilizing console for a shutter box 200, when WSP is used	18,10€/pc.
<b>SKM</b>	Steel assembly anchor	1,30€/pc.
<b>External concealed lath</b>	Colours: white (LT-02), light brown (LT-09), dark brown (LT-08), anthracite (LT-23)	3,50€/rm
<b>Adapting profile RN-1 70</b>	Universal adapting profile with aluminium infill-white	6,10€/rm
	Universal adapting profile with aluminium infill-veneered: smooth anthracite (10), anthracite (12), mahogany (22), walnut (30), swamp oak (34), golden oak (48), Winchester (54), grey (99)	7,30€/rm
<b>Case widening &lt; 5,5 cm</b>	The service of the roller shutter case widening up to 5,5cm (side of the case made of white, 5mm-thick plexi)	30,20€/pc.
<b>Case widening ≥ 5,5 cm</b>	The service of the roller shutter case widening from 5,5cm	30,20€/pc.

\* - Completion date up to 15 business days.

# TP1000K<sup>®</sup>

## PA-39, PA-45, 52 - aluminium profile 39mm, 45mm and 52mm (including end caps)

Box size	width 0,35 - 2m, max. surface 6,5m <sup>2</sup>						width 0,35 - 2,5m, max. surface 6,5m <sup>2</sup>						width 0,35 - 3m, max. surface 6,5m <sup>2</sup>			width 0,35 - 3,7m, max. surface 8m <sup>2</sup>		
	Maximum height of shutte (including the box size)/cm			Maximum height of shutte (including the box size)/cm			Maximum height of shutte (including the box size)/cm			Maximum height of shutte (including the box size)/cm			Maximum height of shutte (including the box size)/cm			Maximum height of shutte (including the box size)/cm		
		with automatic bolt (including the box size)/cm	with blocking hanger (including the box size)/cm		with automatic bolt (including the box size)/cm	with blocking hanger (including the box size)/cm		with automatic bolt (including the box size)/cm	with blocking hanger (including the box size)/cm		with automatic bolt (including the box size)/cm	with blocking hanger (including the box size)/cm		with automatic bolt (including the box size)/cm	with blocking hanger (including the box size)/cm		with automatic bolt (including the box size)/cm	with blocking hanger (including the box size)/cm
<b>PVC</b>	PA-39 ø 40+PZ50	PA-39 ø 40-rygiel	PA-39 ø 40-WB.	PA-39 ø 60+PZ70	PA-39 ø 60-rygiel	PA-39 ø 60-WB	PA-45 ø 60+PZ70	PA-45 ø 60-rygiel	PA-45 ø 60-WB	PA-52 ø 60+PZ70	PA-52 ø 60-rygiel	PA-52 ø 60-WB						
<b>180 mm</b>	236	232	230	212	200	216	169	169	169	132	x	153						
<b>220 mm</b>	349	340	349	328	298	298	255	255	255	212	x	212						
<b>250 mm</b>	418	418	418	402	402	402	334	334	334	239	x	265						
<b>180 mm+konsola statyczna</b>	169	165	177	158	154	142	129	129	120	101	x	111						
<b>220 mm+konsola statyczna</b>	302	302	302	290	290	290	255	255	245	212	x	212						
<b>250 mm+konsola statyczna</b>	418	418	418	402	402	402	334	334	334	239	x	265						
<b>180 mm+dodatkową wkładką styrop.</b>	138	134	134	95	91	95	93	93	93	64	x	76						
<b>220 mm+dodatkową wkładką styrop.</b>	250	250	250	212	204	204	173	173	173	170	x	180						
<b>250 mm+dodatkową wkładką styrop.</b>	418	418	418	402	402	402	334	334	334	239	x	265						

# TP1000K®

## STANDARD

<b>Curtain</b>	Available colours for PA 39 (except for the steel anthracite DB703 (24), woodec turner oak(42)), PA 45 (except for the woodec turner oak(42)), PA 52 – no additional charge
<b>Bottom lath</b>	silver (01), white (02), grey (03), light beige (05), light grey(07), dark brown (08), light brown (09), ivory (16), black(20), anthracite (23) Bottom lath buffer Veneering of bottom lath - Veneer Colour Chart and turnaround times – see page 2 (except for color 42 woodec turner oak)
<b>Tape roller</b>	Possible length for white or brown colour -5mb (up to 240 cm height, up to 12kg)
<b>NPS-011, NPS-010 adapter</b>	KLIK universal adapting profile (up to 180cm width) or slide profile (reinforced with aluminium input NPL-020)
<b>SUB NPT 56 mm</b>	Steel side handles (NPT-140, NPT-040, NPT-150)
<b>NPW-065</b>	Additional graphite insert for the box 180, 220, 250 without a mosquito net - free (upon the customer's request)
<b>NPW-140 L/P</b>	Styrofoam inserts for the box sides 180
<b>NPW-090 L/P</b>	Styrofoam inserts for the box sides 220
<b>NPW-160 L/P</b>	Styrofoam inserts for the box sides 250
<b>End caps of the guides</b>	At a 5 degrees angle – charge free (according to the customer's wish)
<b>Cutting guides under the angle</b>	Charge free – according to the customer's wish

## FOR ADDITIONAL CHARGE

<b>Curtain</b>	PA 39 steel anthracite DB703 (24), PA45 woodec turner oak (42)	5%
<b>Inspection hatch</b>	Veneering of the inspection hatch– Veneer Colour Chart and turnaround times – see page 2	3%
<b>Bottom lath</b>	Powder coated: dark beige(04), green(13), cream white(15), bordoux(19), steel olive(26), basalt grey(27)	5%
	Powder coated: according to RAL Colour Chart	10%
	Veneering of the bottom lath (color 42 woodec turner oak only) *	5%
<b>PVC NPR-020 guide</b>	Veneering of the guide – Veneer Colour Chart and turnaround times – see page 2	8%
<b>Guide</b>	Guide extension - white	12,10€/rm
	Guide extension - veneered	13,40€/rm
<b>Tape roller 11m</b>	Refers to roller shutters exceeding 240cm (according to the customer's wish – white or brown)	7,60€/pc.
<b>WSP GW / WSP GZ</b>	Top steel reinforcement of the shutter box without a mosquito net, internal or external NPT-020	4,40€/rm
<b>WSP D</b>	Bottom steel reinforcement of the shutter box without a mosquito net NPT-010	7,70€/rm
<b>PURS</b>	PURS 10 x 2mm x 12,5mb expansion tape	7,90€/pc.
<b>External/internal concealed lath</b>	Colours: white (NPL-010-02), light brown (NPL-010-09), dark brown (NPL-010-08), black (NPL-010-20), anthracite (NPL-010-23)	4,20€/rm
<b>SUB NPT 30 mm L/P</b>	Steel side handle (NPT-120, NPT-030, NPT-130)	13,30€/set
<b>SKM NPT-050</b>	Steel assembly anchor	0,70€/pc.
<b>ALU NPR-040 guide**</b>	Powder coated: silver (01), white (02), grey (03), light beige (05), light grey(07), dark brown (08), light brown (09), ivory (16), black(20), anthracite (23)	14,50€/rm
	Powder coated: dark beige(04), green(13), cream white(15), bordoux(19), steel olive(26), basalt grey (27)	17,60€/rm
	Powder coated: according to RAL Colour Chart	20,50€/rm
	veneering of the guides – Veneer Colour Chart and turnaround times – see page 2	18,70€/rm
<b>NPD-090</b>	Cap for the curtain channel in the guide NPR-010 and NPR-020 white	1,60€/rm
	Veneering of the cap for the curtain channel in the guide NPR-010 and NPR-020 (Veneer Colour Chart- see page 2)	3,40€/rm
<b>NPD-080</b>	Cap for the insect screen channel in the guide NPR-010 and NPR-030 white	1,60€/rm
	Veneering of the cap for the insect screen channel in the guide NPR-010 and NPR-020 (Veneer Colour Chart- see page 2)	3,40€/rm
<b>NPD-010 L/P</b>	End caps for the box sides 180 (available only in boxes without enlargement)	1,60€/set
<b>NPD-020 L/P</b>	End caps for the box sides 220 (available only in boxes without enlargement)	2,40€/set
<b>NPD-030 L/P</b>	End caps for the box sides 250 (available only in boxes without enlargement)	1,60€/set
<b>NPD-110</b>	End cap covering the front connection of two boxes 180	1,30€/pc.
<b>NPD-150</b>	End cap covering the front connection of two boxes 220	1,30€/pc.
<b>NPD-100</b>	End cap covering the front connection of two boxes 250	1,30€/pc.
<b>NPD-120</b>	End cap covering the bottom connection of two boxes 180, 250	1,00€/pc.
<b>NPD 160</b>	End cap covering the bottom connection of two boxes 220	1,00€/pc.
<b>NPTK - 010</b>	Stabilizing console for shutter box 220mm without the bottom reinforcement	18,10€/pc.
<b>NPTK - 020</b>	Stabilizing console for shutter box 220mm with the bottom reinforcement	18,10€/pc.
<b>NPTK-030</b>	Stabilizing console for 180 mm box without bottom reinforcement	18,10€/pc.
<b>NPTK-040</b>	Stabilizing console for 180 mm box with bottom reinforcement	18,10€/pc.
<b>NPTK-050</b>	Stabilizing console for 250 mm box without bottom reinforcement	18,10€/pc.
<b>NPTK-060</b>	Stabilizing console for 250 mm box with bottom reinforcement	18,10€/pc.
<b>Case widening &lt; 5,5cm</b>	The service of the roller shutter case widening up to 5,5cm (side of the case made of white, 5mm-thick plexi)	30,20€/pc.
<b>Case widening &gt; 5,5cm</b>	The service of the roller shutter case widening from 5,5cm	30,20€/pc.
<b>PGS-31 B</b>	Box enlargement 220/250 by 31 mm white	7,50€/rm
<b>PGS-31 B+D</b>	Box enlargement 220/250 by 31 mm white + decor	9,00€/rm
<b>PGS-31 D</b>	Box enlargement 220/250 by 31 mm decor	10,30€/rm
<b>PGS-62 B</b>	Box enlargement 220/250 by 62 mm white	15,00€/rm
<b>PGS-62 B+D</b>	Box enlargement 220/250 by 62 mm white + decor	17,80€/rm
<b>PGS-62 D</b>	Box enlargement 220/250 by 62 mm decor	20,50€/rm

\* - Completion date up to 15 business days.

\*\* - In the colour of the slide other than 02, box edge (NPS-100) with lining (list of lining types - cover) is included in the shutter price. There is no indicated colour for NPS-100 means that colour 02 has been applied.



# TP1000K<sup>®</sup>

## WITH MOSQUITO NET

### STANDARD

<b>Curtain</b>	Available colours for PA 39 (except for the steel anthracite DB703 (24), woodec turner oak(42)), PA 45 (except for the woodec turner oak(42)) – no additional charge
<b>Bottom lath</b>	silver (01), white (02), grey (03), light beige (05), light grey(07), dark brown (08), light brown (09), ivory (16), black(20), anthracite (23) Bottom lath buffer Veneering of bottom lath - Veneer Colour Chart and turnaround times – see page 2 (except for color 42 woodec turner oak)
<b>Tape roller</b>	Possible length for white or brown colour -5mb (up to 240 cm height, up to 12kg)
<b>NPS-011, NPS-010 adapter</b>	KLIK universal adapting profile (up to 180cm width) or slide profile (reinforced with aluminium input NPL-020)
<b>SUB NPT 56 mm</b>	Steel side handles (NPT-140, NPT-040, NPT-150)
<b>NPW-075</b>	Additional graphite insert for the box 180, 220, 250 with a mosquito net - free (upon the customer's request)
<b>NPW-150L/P</b>	Styrofoam inserts for the box sides 180 with a mosquito net
<b>NPW-100L/P</b>	Styrofoam inserts for the box sides 220 with a mosquito net
<b>NPW-170L/P</b>	Styrofoam inserts for the box sides 250 with a mosquito net
<b>End caps of the guides</b>	At a 5 degrees angle – charge free (according to the customer's wish)
<b>Cutting guides under the angle</b>	Charge free – according to the customer's wish

### FOR ADDITIONAL CHARGE

<b>Curtain</b>	PA 39 steel anthracite DB703 (24), woodec turner oak (42), PA45 woodec turner oak (42)	5%
<b>Inspection hatch</b>	Veneering of the inspection hatch– Veneer Colour Chart and turnaround times – see page 2	3%
<b>Bottom lath</b>	Powder coated: dark beige(04), green(13), cream white (15), bordoux(19), steel olive(26), basalt grey (27)	5%
	Powder coated: according to RAL Colour Chart	10%
	Veneering of the bottom lath (color 42 woodec turner oak only) *	5%
<b>PCV NPR-020 guide</b>	Veneering of the guide – Veneer Colour Chart and turnaround times – see page 2	8%
<b>Guide</b>	Guide extension - white	12,10€/rm
	Guide extension - veneered	13,40€/rm
<b>Tape roller 11m</b>	Refers to roller shutters exceeding 240cm (according to the customer's wish – white or brown)	7,60€/pc.
<b>WSP GW / WSP GZ / WSP DM</b>	Top steel reinforcement of the shutter box without a mosquito net, internal or external NPT-020	4,40€/rm
<b>PURS</b>	PURS 10 x 2mm x 12,5mb expansion tape	7,90€/pc.
<b>External/internal concealed lath</b>	Colours: white (NPL-010-02), light brown (NPL-010-09), dark brown (NPL-010-08), black (NPL-010-20), anthracite (NPL- 010-23)	4,20€/rm
<b>SUB NPT 30 mm L/P</b>	Steel side handle (NPT-120, NPT-030, NPT-130)	13,30€/set
<b>SKM NPT-050</b>	Steel assembly anchor	0,70€/pc.
<b>ALU guide for a mosquit net NPR-050**</b>	Powder coated: silver (01), white (02), grey (03), light beige (05), light grey(07), dark brown (08), light brown (09), ivory (16), black(20), anthracite (23)	21,20€/rm
	Powder coated: dark beige(04), green(13), cream white(15), bordoux(19), steel olive(26), basalt grey (27)	24,10€/rm
	Powder coated: according to RAL Colour Chart	27,10€/rm
	Veneering of the guides – Veneer Colour Chart and turnaround times – see page 2	24,70€/rm
<b>NPD-090</b>	Cap for the curtain channel in the guide NPR-010 and NPR-020 white	1,60€/rm
	Veneering of the cap for the curtain channel in the guide NPR-010 and NPR-020 (Veneer Colour Chart- see page 2)	3,40€/rm
<b>NPD-080</b>	Cap for the insect screen channel in the guide NPR-010 and NPR-030 white	1,60€/rm
	Veneering of the cap for the insect screen channel in the guide NPR-010 and NPR-030 (Veneer Colour Chart- see page 2)	3,40€/rm
<b>NPD-010 L/P</b>	End caps for the box sides 180 (available only in boxes without enlargement)	1,60€/set
<b>NPD-020 L/P</b>	End caps for the box sides 220 (available only in boxes without enlargement)	2,20€/set
<b>NPD-030 L/P</b>	End caps for the box sides 250 (available only in boxes without enlargement)	1,60€/set
<b>NPD-110</b>	End cap covering the front connection of two boxes 180	1,30€/pc.
<b>NPD-150</b>	End cap covering the front connection of two boxes 220	1,30€/pc.
<b>NPD-100</b>	End cap covering the front connection of two boxes 250	1,30€/pc.
<b>NPD 120</b>	End cap covering the bottom connection of two boxes 180, 250	1,00€/pc.
<b>NPD-160</b>	End cap covering the bottom connection of two boxes 220	1,00€/pc.
<b>NPTK - 010</b>	Stabilizing console for shutter box 220mm without the bottom reinforcement	18,10€/pc.
<b>NPTK - 020</b>	Stabilizing console for shutter box 220mm with the bottom reinforcement	18,10€/pc.
<b>NPTK-030</b>	Stabilizing console for 180 mm box without bottom reinforcement	18,10€/pc.
<b>NPTK-040</b>	Stabilizing console for 180 mm box with bottom reinforcement	18,10€/pc.
<b>NPTK-050</b>	Stabilizing console for 250 mm box without bottom reinforcement	18,10€/pc.
<b>NPTK-060</b>	Stabilizing console for 250 mm box with bottom reinforcement	18,10€/pc.
<b>Mosquito-net</b>	Mesh colours: grey (03), black (20). Colours for bottom lath of mosquito-net: silver (01), white (02), grey (03), light beige (05), light grey(07), dark brown (08), light brown (09), ivory (16), black(20), anthracite (23)	95,00€/pc.
<b>Bottom lath of mosquito net</b>	Powder coated: dark beige(04), green(13), cream white(15), bordoux(19), steel olive(26), basalt grey(27)	5%
	Powder coated: according to RAL Colour Chart	10%
<b>Case widening &lt; 5,5cm</b>	The service of the roller shutter case widening up to 5,5cm (side of the case made of white, 5mm-thick plexi)	30,20€/pc.
<b>Case widening ≥ 5,5cm</b>	The service of the roller shutter case widening from 5,5cm	30,20€/pc.
<b>PGS-31 B</b>	Box enlargement 220/250 by 31 mm white	7,50€/rm
<b>PGS-31 B+D</b>	Box enlargement 220/250 by 31 mm white + decor	9,00€/rm
<b>PGS-31 D</b>	Box enlargement 220/250 by 31 mm decor	10,30€/rm
<b>PGS-62 B</b>	Box enlargement 220/250 by 62 mm white	15,00€/rm
<b>PGS-62 B+D</b>	Box enlargement 220/250 by 62 mm white + decor	17,80€/rm
<b>PGS-62 D</b>	Box enlargement 220/250 by 62 mm decor	20,50€/rm

\* - Completion date up to 15 business days.

\*\* - In the colour of the slide other than 02, box edge (NPS-100) with lining (list of lining types - cover) is included in the shutter price. There is no indicated colour for NPS-100 means that colour 02 has been applied.

# MX1200<sup>®</sup>

## PA-39, PA-45 – aluminium profile 39mm and 45mm (including end caps)

width 0,35 - 2m, max. surface 6,5m<sup>2</sup> width 0,35 - 2,5m, max. surface 6,5m<sup>2</sup> width 0,35 - 3m, max. surface 6,5m<sup>2</sup>

Box size	Maximum height of shutte (including the box size)/cm			Maximum height of shutte (including the box size)/cm			Maximum height of shutte (including the box size)/cm		
		with automatic bolt (including the case size)/cm	with blocking hanger (including the case size)/cm		with automatic bolt (including the case size)/cm	with blocking hanger (including the case size)/cm		with automatic bolt (including the case size)/cm	with blocking hanger (including the case size)/cm
<b>PVC</b>	PA 39 ø 40+PZ50	PA 39 ø 40-rygiel	PA 39 ø 40-WB.	PA 39 ø 60+PZ70	PA 39 ø 60-rygiel	PA 39 ø 60-WB	PA 45 ø 60+PZ70	PA 45 ø 60-rygiel	PA 45 ø 60-WB
<b>160 mm</b>	202	198	202	194	190	187	163	163	158
<b>160 mm z konsolą statyczną</b>	198	198	195	187	175	187	136	136	140
<b>160 mm z dodatkową wkładką styropianową</b>	101	101	101	85	85	81	59	59	59
<b>200 mm</b>	343	335	347	344	344	339	279	279	270
<b>200 mm z konsolą statyczną</b>	300	300	339	331	331	316	226	226	226
<b>200 mm z dodatkową wkładką styropianową</b>	206	206	206	195	195	195	162	162	153

**Note!** If the width of roller shutter exceeds 2m, pipe ø 60 is recommended. Additionally, a case reinforcement (WSP) is recommended. If you decide to put a WSP reinforcement in case construction, the figures presented in the above table must be reduced by 20cm.

PZ- expansion ring from ø 40 on ø 50 or from ø 60 on ø 70.

### STANDARD

<b>Curtain</b>	Available colours for PA 39 (except for the steel anthracite DB703 (24), woodec turner oak(42)), PA 45 (except for the woodec turner oak(42)) – no additional charge
<b>Bottom lath</b>	Silver (01), white (02), grey (03), light beige (05), light grey(07), dark brown (08), light brown (09), ivory (16), black(20), anthracite (23) Bottom lath buffer Veneering of bottom lath - Veneer Colour Chart and turnaround times – see page 2 (except for color 42 woodec turner oak)
<b>Tape roller</b>	Possible length for white or brown colour -5mb (up to 240 cm height, up to 12kg)
<b>Adapter NRS-010, NRS-110</b>	Adaptation profile universal
<b>SUB</b>	Steel side handles (NRT-020 L/R., NRT-030, NRT-040 L/R (depending on the box)
<b>Guide bottom end caps</b>	Guide bottom end caps inclined at an angle of 5° - free of charge (upon the customer's request)
<b>Cutting guides under an angle</b>	Charge free – according to the customer's wish
<b>Side end caps</b>	NRD-020 side end caps for the box 160mm / NRD-030 for the box 200mm

### FOR ADDITIONAL CHARGE

<b>Curtain</b>	PA 39 steel anthracite DB703 (24), woodec turner oak only (42), PA45 woodec turner oak (42)	5%
<b>hutter box</b>	Enlargement of the shutter box	5%
<b>Bottom lath</b>	Powder coated: dark beige(04), green(13), cream white (15), bordoux(19), steel olive(26), basalt grey (27)	5%
	Powder coated: according to RAL Colour Chart	10%
	Veneering of the bottom lath (color 42 woodec turner oak only) *	5%
<b>Guide</b>	veneering of the guides – veneer color 10, 12, 18, 48. Other veneer colors - individual pricing.	8%
	Guide extension - white	7,60€/m
	Guide extension - veneered	9,40€/m
<b>Tape roller 11m</b>	Refers to roller shutters exceeding 240cm (according to the customer's wish – white or brown)	7,60€/m
<b>SKM NPT-050</b>	Steel assembly anchor	0,70€/pc.
<b>NRW-040/080/050</b>	Bottom styrofoam insert for the box 160, 200, 200 with a handle	4,90€/m
<b>NRTK-010</b>	Stabilizing console for a shutter box 160	15,20€/pc.
<b>NRTK-030</b>	Stabilizing console for a shutter box 200	15,20€/pc.
<b>External concealed lath</b>	External concealed lath - white (LT-02), light brown (LT-09), dark brown (LT-08), anthracite (LT-23)	3,50€/m
<b>PURS</b>	PURS 10 x 2mm x 12,5mb expansion tape	7,90€/pc.

\* - Completion date up to 15 business days.

# TOP MOUNTED ROLLER SHUTTERS - SN5000®

## RECOMMENDED EPS BOX SIZES

Recommended box size for SN5000® roller shutter without mosquito net  
PA-39, PA-45, PA-52 curtain (including lateral caps) / ZF3000

0,35-3 m wide, max. area 6,5 m<sup>2</sup> - PA-39, PA-45  
0,35-3,7 m wide, max. area 8,0 m<sup>2</sup> - PA-52  
0,67-4,50 m wide, max. area 16,0 m<sup>2</sup> - ZF3000

Type of the box	Max. height of the roller shutter with							
		with blocking bracket (cm)		with blocking bracket (cm)		with blocking bracket (cm)	with external blind ZF3000 (cm)	
EPS	PA-39 ø60+PZ70, ø60+rygieł	PA-39 ø 60-WB	PA-45 ø60+PZ70, ø60+rygieł	PA-45 ø 60-WB	PA-52 ø60+PZ70	PA-52 ø 60-WB	C80	Z90
300 mm	411	399	352	338	239	260	187	307
365 mm	411	399	352	338	239	260	187	307

Type of the box	Height of the box	Depth of the box
PSK-300	309 mm	300 mm
PSK-365	309 mm	365 mm

Recommended box size for SN5000® roller shutter with mosquito net  
PA-39, PA-45, PA-52 curtain (including lateral caps)

0,67-1,8 m wide max. area 4,5 m<sup>2</sup>

Type of the box	Max. height of the roller shutter with box					
		with blocking bracket (cm)		with blocking bracket (cm)		with blocking bracket (cm)
EPS	PA-39 ø60+PZ70, ø60+rygieł	PA-39 ø 60-WB	PA-45 ø60+PZ70, ø60+rygieł	PA-45 ø 60-WB	PA-52 ø60+PZ70	PA-52 ø 60-WB
300 mm	250	250	250	250	249	239
365 mm	250	250	250	250	249	239

Type of the box	max. window frame thickness		
	Internal cover	External cover	External blind
PSK-300	90 mm	195 mm	150 mm
PSK-365	90 mm	255 mm	210 mm

Note! The minimum width of the roller shutter with mosquito net and slowing system is 67 cm. For roller shutters with PA-39, PA-45, PA-52 curtain and a width of more than 1.8 m it is advisable to include a stabilizing console. For roller shutters with external blind, it is advisable to include a stabilizing console of over 1.5 m.

### STANDARD

<b>Curtain</b>	All available colors PA 39 (except for the steel anthracite DB703 (24), woodec turner oak(42)), PA 45 (except for the woodec turner oak(42)), PA52 – no additional charge
<b>Bottom lath*,**</b>	Silver (01), white (02), grey (03), light beige (05), light grey(07), dark brown (08), light brown (09), ivory (16), black(20), anthracite (23) Stoppers Veneering the bottom lath - veneer color: 10, 12, 18, 30, 48, 97 (other veneers colors - completion time up to 15 working days)
<b>Bottom lath***</b>	Steel anthracite (DB 703), anthracite (7016), light gray (7035), black (9005), silver (9006), gray aluminium (9007), white (9016), beige (VSR 240), olive (VSR 780)
<b>Tape coiler*</b>	In white, brown or anthracite on request 5 mm (up to a height of 240 cm, up to 12 kg)
<b>SUB</b>	Steel side handles (RST-020L/P, RST-030L/P, RST-040L/P, RST-050L/P - depending on the box)
<b>External concealed lath*,**</b>	White (02)
<b>External concealed lath***</b>	Silver (01), white (02), grey (03), light beige (05), light grey(07), dark brown (08), light brown (09), ivory (16), black(20), anthracite (23)
<b>End caps of guides</b>	Inclined at an angle of 5° - free (on the customer's request)
<b>Cutting the guides at an angle</b>	Free (on customer's request)
<b>Packing</b>	Packing into a rigid carton (box packed in carton, guides packed in bubble wrap)

### FOR ADDITIONAL CHARGE

<b>Curtain</b>	PA 39 steel anthracite DB703 (24)), woodec turner oak (42), PA 45 woodec turner oak (42)	5%
<b>Box</b>	Box enlargement (box 309x365)	5%
<b>POS SN5000 7CM*</b>	Extension of the roller shutter box by 7 cm	54,50€/set
<b>POS SN5000 10CM*</b>	Extension of the roller shutter box by 10 cm	65,10€/set
<b>RSS-080 L/P</b>	Box side insulation	21,20€/set
<b>Inspection cover**</b>	Veneering the inspection cover - veneer color: 10, 12, (other veneers colors - completion time up to 15 working days)	3%
<b>F-USG-A***</b>	Automatic top rail handle	1,80€/pc
<b>Bottom lath*,**</b>	Varnished: dark beige (04), green (13), cream white (15), maroon (19), steel olive (26), basalt gray (27) Varnished: according to the RAL template	5% 10%
<b>RST-010*</b>	Steel reinforcement of the crossbar	14,00€/rm
<b>Guide</b>	Veneering the guides - veneer color: 10, 12, (other veneers colors - completion time up to 15 working days) Guide extension - white Guide extension - veneered	3% 22,50€/rm 24,10€/rm
<b>Tape coiler 11m *</b>	Applies to roller shutters of over 240 cm (white or brown on request)	7,60€/pc
<b>RSTK-010*</b>	Stabilizing console for box 300, 365	79,40€/pc
<b>RSTK-020, RSTK-030**,***</b>	Stabilizing console for box 300, 365	89,00€/pc
<b>External concealed lath*,**</b>	Veneering the external concealed lath veneer color: 10, 12, (other veneers colors - completion time up to 15 working days) Varnished: dark beige (04), green (13), cream white (15), maroon (19), steel olive (26), basalt gray (27) Steel anthracite (DB 703), anthracite (7016), light gray (7035), black (9005), silver (9006), gray aluminium (9007), white (9016), beige (VSR 240), olive (VSR 780) Varnished: according to the RAL template	3% 15% 30%
<b>RSC-350*</b>	Extension of the internal concealed lath by 15 cm	9,20€/rm
<b>Mosquito net*,**</b>	Net in: gray (03), black (20) Bottom lath in: silver (01), white (02), gray (03), beige (05), light gray (07), dark brown (08), brown (09), ivory (16), black (20), anthracite (23)	338,00€/pc
<b>Mosquito net bottom lath (extra charge per 1 mosquito net)</b>	Varnished: dark beige (04), green (13), cream white (15), maroon (19), steel olive (26), basalt gray (27) Varnished: according to the RAL template	5% 10%

\* - Applies only to SN5000 MS RI  
\*\* - Applies only to SN5000 MS RA  
\*\*\* - Applies only to SN5000 MS RS

Additional equipment - p. 6.18. Drives - p. 6.1. Colors 04, 07, 13, 15, 19, 20, 26, 27 and according to the RAL template - completion time up to 15 working days. In the case of less popular RAL colors - individual pricing.





# FRONT MOUNTED ROLLER SHUTTERS

**ST2000<sup>®</sup>**

ST2000 with mosquito net



**RL2000<sup>®</sup>**

RL2000 with mosquito net



**OS2000<sup>®</sup>**

OS2000 with mosquito net



**IT2000<sup>®</sup>**

IT2000 with mosquito net





# ST2000®

## PA-39, PA-45, PA-52 – aluminium profile 39mm, 45mm and 52 mm (including end caps)

BOX SIZE	width 0,35 - 2m, max. surface 6,5m <sup>2</sup>			width 0,35 - 2,5m, max. surface 6,5m <sup>2</sup>			width 0,35 - 3m, max. surface 6,5m <sup>2</sup>			width 0,35 - 3,7m <sup>2</sup> , max. surface 8m <sup>2</sup>		
	Maximum height of shutter			Maximum height of shutter			Maximum height of shutter			Maximum height of shutter		
	with automatic bolt (including the box size)/cm	with blocking hanger (including the box size)/cm	with automatic bolt (including the box size)/cm	with blocking hanger (including the box size)/cm	with automatic bolt (including the box size)/cm	with blocking hanger (including the box size)/cm	with automatic bolt (including the box size)/cm	with blocking hanger (including the box size)/cm	with automatic bolt (including the box size)/cm	with blocking hanger (including the box size)/cm	with automatic bolt (including the box size)/cm	with blocking hanger (including the box size)/cm
ALUMINIUM	PA-39 ø 40+PZ50	PA-39 ø 40-rygiel	PA-39 ø 40-WB	PA-39 ø 60+PZ70	PA-39 ø 60-rygiel	PA-39 ø 60-WB	PA-45 ø 60+PZ70	PA-45 ø 60-rygiel	PA-45 ø 60-WB	PA-52 ø 60+PZ70	PA-52 ø 60-WB	
SK-137	152	152	142	126	126	X	X	X	X	X	X	
SK-150	197	197	186	182	182	151	126	121	X	X	X	
SK-165	250	250	242	236	236	199	163	168	138	120		
SK-180	306	306	310	294	294	282	214	214	196	190		
SK-205	394	394	402	398	398	359	294	294	270	260		

Note! If the width of roller shutter exceeds 2m, pipe ø 60 is recommended.

PZ- expansion ring from ø 40 on ø 50 or from ø 60 on ø 70

In case of using cord as a drive in D exit the box has to be enlarged by one size.

### STANDARD

Shutter box	Silver (01), white (02), grey (03), light beige (05), light grey(07), dark brown (08), light brown (09), ivory (16), black(20), anthracite (23)
Guide	Silver (01), white (02), grey (03), light beige (05), light grey(07), dark brown (08), light brown (09), ivory (16), black(20), anthracite (23)
Curtain	Colours available for PA 39 (except for the steel anthracite DB703 (24), woodec turner oak(42)), PA 45 (except for the woodec turner oak(42)), PA52 – no additional charge
Bottom lath	Silver (01), white (02), grey (03), light beige (05), light grey(07), dark brown (08), light brown (09), ivory (16), black(20), anthracite (23) Veneering of bottom lath - Veneer Colour Chart and turnaround times – see page 2 (except for color 42 woodec turner oak)
Tape roller	Possible length for white or brown colour -5mb (up to 240 cm height, up to 12kg)
Hole drilling in the guides	Charge free – according to the customer's wish

### FOR ADDITIONAL CHARGE

Shutter box	Enlargement of the shutter box	5%
	Powder coated: dark beige(04), green(13), cream white(15), bordoux(19), steel olive(26), basalt grey (27)	15%
	Powder coated: according to RAL Colour Chart	30%
Guide	Powder coated: dark beige(04), green(13), cream white(15), bordoux(19), steel olive(26), basalt grey (27)	10%
	Powder coated: according to RAL Colour Chart	20%
	One-sided veneering of the guides – Veneer Colour Chart and turnaround times – see page 2	10%
	Guide extension - lacquered	18,00€/m
	Guide extension - veneered	24,70€/m
Curtain	PA 39 steel anthracite DB703 (24), woodec turner oak only (42), PA 45 woodec turner oak (42)	5%
Bottom lath	Powder coated: dark beige(04), green(13), cream white(15), bordoux(19), steel olive(26), basalt grey (27)	5%
	Powder coated: according to RAL Colour Chart	10%
	Veneering of the bottom lath (color 42 woodec turner oak only) *	5%
Roller shutter Decor- colours: 22-mahogany, 30-walnut, 48-golden oak, 54-winchester Available shutter box sizes: 137mm, 165mm, 205mm)	Powder coated shutter box + veneered guides + Powder coated box sides RAL: 8017 - mahogany, 8028 - walnut, 8003 - golden oak, 1011 - winchester	10%
	Powder coated shutter box + veneered guides + decor box sides 22 - mahogany, 30 - walnut, 48 - golden oak, 54 - winchester	17%
Tape roller 11m	Refers to roller shutters exceeding 240cm (according to the customer's wish – white or brown)	7,60€/pc.
Cord coiler up to 11m	Refers to roller shutters exceeding 240cm (according to the customer's wish – white or brown)	12,40€/pc.
PRS-500-SPR	Additional charge for a spring for guiding the 500mm cable	1,10€/pc.
Case widening	The service of the roller shutter case widening	39,40€/pc.

\* - Completion date up to 15 business days.

# ST2000<sup>®</sup>

## WITH MOSQUITO NET

PA-39, PA-45 – aluminium profile 39mm and 45mm (including end caps)  
width 0,55 - 1,8m, max. surface 4,5m<sup>2</sup>

BOX SIZE	Maximum height of shutter			Maximum height of shutter			Maximum height of shutter		
		with automatic bolt (including the box size)/cm	with blocking hanger (including the box size)/cm		with automatic bolt (including the box size)/cm	with blocking hanger (including the box size)/cm		with automatic bolt (including the box size)/cm	with blocking hanger (including the box size)/cm
ALUMINIUM	PA-39 ø 40+PZ50	PA-39 ø 40-rygiel	PA-39 ø 40-WB	PA-39 ø 60+PZ70	PA-39 ø 60-rygiel	PA-39 ø 60-WB	PA-45 ø 60+PZ70	PA-45 ø 60-rygiel	PA-45 ø 60-WB
SK-137	X	X	X	X	X	X	X	X	X
SK-165	176	179	144	156	156	121	X	X	X
SK-180	224	228	216	200	200	200	X	X	X
SK-205	250	250	250	250	250	250	250	250	250

If the width of roller shutter exceeds 2m (for rollers shutters with sections) pipe ø 60 is recommended.

PZ- expansion ring from ø 40 on ø 50 or from ø 60 on ø 70

In case of using cord as a drive in D exit the box has to be enlarged by one size.

### STANDARD

Shutter box	Silver (01), white (02), grey (03), light beige (05), light grey(07), dark brown (08), light brown (09), ivory (16), black(20), anthracite (23)
Guide	Silver (01), white (02), grey (03), light beige (05), light grey(07), dark brown (08), light brown (09), ivory (16), black(20), anthracite (23)
Curtain	Colours available for PA 39 (except for the steel anthracite DB703 (24), woodec turner oak(42)), PA 45, PA 52 – no additional charge PA 45 (except for the woodec turner oak(42)) – no additional charge
Bottom lath	Silver (01), white (02), grey (03), light beige (05), light grey(07), dark brown (08), light brown (09), ivory (16), black(20), anthracite (23) Veneering of bottom lath - Veneer Colour Chart and turnaround times – see page 2 (except for color 42 woodec turner oak)
Tape roller	Possible length for white and brown colour -5mb (up to 240 cm height, up to 12kg)
Hole drilling in the guides	Charge free – according to the customer's wish

### FOR ADDITIONAL CHARGE

Shutter box	Enlargement of the shutter box	5%
	Powder coated: dark beige(04), green(13), cream white(15), bordoux(19), steel olive(26), basalt grey (27)	15%
	Powder coated: according to RAL Colour Chart	30%
Guide	Powder coated: dark beige(04), green(13), cream white(15), bordoux(19), steel olive(26), basalt grey (27)	10%
	Powder coated: according to RAL Colour Chart	20%
	One-sided veneering of the guides - Veneer Colour Chart and turnaround times - see page 2	10%
	Guide extension - lacquered	18,00€/m
	Guide extension - veneered	24,70€/m
Curtain	PA 39 steel anthracite DB703 (24), woodec turner oak only (42), PA 45 woodec turner oak (42)	5%
Bottom lath	Powder coated: dark beige(04), green(13), cream white(15), bordoux(19), steel olive(26), basalt grey (27)	5%
	Powder coated: according to RAL Colour Chart	10%
	Veneering of the bottom lath (color 42 woodec turner oak only) *	5%
Roller shutter Decor- colours: 22-mahogany, 30-walnut, 48-golden oak, 54-winchester Available shutter box sizes: 137mm, 165mm, 205mm)	Powder coated shutter box + veneered guides + Powder coated box sides RAL: 8017 - mahogany, 8028 - walnut, 8003 - golden oak, 1011 - winchester	10%
	Powder coated shutter box + veneered guides + decor box sides 22 - mahogany, 30 - walnut, 48 - golden oak, 54 - winchester	17%
Tape roller 11m	Refers to roller shutters exceeding 240cm (according to the customer's wish - white or brown)	7,60€/pc.
Cord coiler up to 11m	Refers to roller shutters exceeding 240cm (according to the customer's wish - white or brown)	12,40€/pc.
Rolled mosquito-net	Mesh colours: grey (03), black (20). Colours for bottom lath of mosquito-net: silver (01), white (02), grey (03), light beige (05), light grey (07), dark brown (08), light brown (09), ivory (16), black(20), anthracite (23)	95,00€/pc.
Pleated mosquito-net	Mesh colours: black (20). Colours for profiles of mosquito-net: silver (01), white (02), grey (03) light beige (05), light grey (07), dark brown (08), light brown (09), ivory (16), black(20), anthracite (23)	page: 6.19
Bottom lath of rolled mosquito net, Profiles of pleated mosquito net	Powder coated: dark beige(04), green(13), cream white(15), bordoux(19), steel olive(26), basalt grey (27)	5%
	Powder coated: according to RAL Colour Chart	10%
PRS-500-SPR	Additional charge for a spring for guiding the 500mm cable	1,10€/pc.
ZSKM	End cap for aluminium guide mosquito net channel	1,70€/rm
Case widening	The service of the roller shutter case widening	39,40€/pc.

\* - Completion date up to 15 business days.

# RL2000®

## PA-39, PA-45 – aluminium profile 39mm and 45mm (including end caps)

Box size	width 0,35 - 2m, max. surface 6,5m <sup>2</sup>			width 0,35 - 2,5m, max. surface 6,5m <sup>2</sup>			width 0,35 - 3m, max. surface 6,5m <sup>2</sup>		
	Maximum height of shutter(including the box size)/cm			Maximum height of shutter(including the box size)/cm			Maximum height of shutter(including the box size)/cm		
	with automatic bolt (including the box size)/cm	with blocking hanger (including the box size)/cm		with automatic bolt (including the box size)/cm	with blocking hanger (including the box size)/cm		with automatic bolt (including the box size)/cm	with blocking hanger (including the box size)/cm	
ALUMINIUM	PA-39 ø 40+PZ50	PA-39 ø 40-rygiel	PA-39 ø 40-WB	PA-39 ø 60+ZP70	PA-39 ø 60-rygiel	PA-39 ø 60-WB	PA-45 ø 60+PZ70	PA-45 ø 60-rygiel	PA-45 ø 60-WB
SK-180	286	286	298	294	302	267	214		214
SK-205	394	394	402	398	410	359	294		294

If the width of roller shutter exceeds 2m, pipe ø 60 is recommended.

PZ- expansion ring from ø 40 on ø 50 or from ø 60 on ø 70.

### STANDARD

Shutter box	Silver (01), white (02), grey (03), light beige (05), light grey(07), dark brown (08), light brown (09), ivory (16), black(20), anthracite (23)
Guide	Silver (01), white (02), grey (03), light beige (05), light grey(07), dark brown (08), light brown (09), ivory (16), black(20), anthracite (23)
Bottom lath	Silver (01), white (02), grey (03), light beige (05), light grey(07), dark brown (08), light brown (09), ivory (16), black(20), anthracite (23)
	Veneering of bottom lath - Veneer Colour Chart and turnaround times – see page 2 (except for color 42 woodec turner oak)
Curtain	Colours available for PA 39 (except for the steel anthracite DB703 (24), woodec turner oak(42)), PA 45 (except for the woodec turner oak(42)) – no additional charge
Tape roller	Possible length for white or brown colour -5mb (up to 240 cm height, up to 12kg)
Hole drilling in the guides	Charge free – according to the customer's wish

### FOR ADDITIONAL CHARGE

Shutter box	Enlargement of the shutter box	5%
	Powder coated: dark beige(04), green(13), cream white(15), bordoux(19), steel olive(26), basalt grey (27)	15%
	Powder coated: according to RAL Colour Chart	30%
Guide	Powder coated: dark beige(04), green(13), cream white(15), bordoux(19), steel olive(26), basalt grey (27)	10%
	Powder coated: according to RAL Colour Chart	20%
	One-sided veneering of the guides – Veneer Colour Chart and turnaround times – see page 2	10%
	Guide extension - lacquered	18,00€/rm
	Guide extension - veneered	24,70€/rm
Cap for aluminium guides	NPPDO-53 single, powder coated silver(01),white(02),grey(03),light beige(05), light grey(07),dark brown(08),light brown(09),ivory(16),black(20),anthracite(23)	4,60€/rm
	NPPDO-79 double, powder coated silver(01),white(02),grey(03),light beige(05), light grey(07),dark brown(08),light brown(09),ivory(16),black(20),anthracite(23)	6,50€/rm
	Powder coated: dark beige(04), green(13), cream white(15), bordoux(19), steel olive(26), basalt grey (27)	10%
	Powder coated: according to RAL Colour Chart	20%
PZO	Mounting plate for oval guide cap	0,50€/pc.
Bottom lath	Powder coated: dark beige(04), green(13), cream white(15), bordoux(19), steel olive(26), basalt grey (27)	5%
	Powder coated: according to RAL Colour Chart	10%
	Veneering of the bottom lath (color 42 woodec turner oak only) *	5%
Curtain	PA 39 steel anthracite DB703 (24), woodec turner oak only (42), PA 45 woodec turner oak (42)	5%
Tape roller 11m	Refers to roller shutters exceeding 240cm (according to the customer's wish – white or brown)	7,60€/pc.
Cord coiler up to 11m	Refers to roller shutters exceeding 240cm (according to the customer's wish – white or brown)	12,40€/pc.
PRS-500-SPR	Additional charge for a spring for guiding the 500mm cable	1,10€/pc.
Case widening	The service of the roller shutter case widening	39,40€/pc.

\* - Completion date up to 15 business days.

# RL2000<sup>®</sup>

## WITH MOSQUITO NET

width 0,55 - 1,8m, max. surface 4,5m<sup>2</sup>

Box size	Maximum height of shutter (including the box size)/cm			Maximum height of shutter (including the box size)/cm			Maximum height of shutter (including the box size)/cm		
		with automatic bolt (including the box size)/cm	with blocking hanger (including the box size)/cm		with automatic bolt (including the box size)/cm	with blocking hanger (including the box size)/cm		with automatic bolt (including the box size)/cm	with blocking hanger (including the box size)/cm
ALUMINIUM	PA-39 ø 40+PZ50	PA-39 ø 40-rygiel	PA-39 ø 40-WB	PA-39 ø 60+PZ70	PA-39 ø 60-rygiel	PA-39 ø 60-WB	PA-45 ø 60+PZ70	PA-45 ø 60-rygiel	PA-45 ø 60-WB
SK-180	224	224	216	200	200	200	X	X	X
SK-205	250	250	250	250	250	250	250	250	250

If the width of roller shutter exceeds 2m, pipe ø 60 is recommended.  
PZ- expansion ring from ø 40 on ø 50 or from ø 60 on ø 70.

### STANDARD

<b>Shutter box</b>	Silver (01), white (02), grey (03), light beige (05), light grey(07), dark brown (08), light brown (09), ivory (16), black(20), anthracite (23)
<b>Guide</b>	Silver (01), white (02), grey (03), light beige (05), light grey(07), dark brown (08), light brown (09), ivory (16), black(20), anthracite (23)
<b>Bottom lath</b>	Silver (01), white (02), grey (03), light beige (05), light grey(07), dark brown (08), light brown (09), ivory (16), black(20), anthracite (23) Veneering of bottom lath - Veneer Colour Chart and turnaround times – see page 2 (except for color 42 woodec turner oak)
<b>Curtain</b>	Colours available for PA 39 (except for the steel anthracite DB703 (24), woodec turner oak(42)), PA 45 (except for the woodec turner oak(42)) – no additional charge
<b>Tape roller</b>	Possible length for white and brown colour -5mb (up to 240 cm height, up to 12kg)
<b>Hole drilling in the guides</b>	Charge free – according to the customer's wish

### FOR ADDITIONAL CHARGE

<b>Shutter box</b>	Enlargement of the shutter box	5%
	Powder coated: dark beige(04), green(13), cream white(15), bordoux(19), steel olive(26), basalt grey (27)	15%
	Powder coated: according to RAL Colour Chart	30%
<b>Guide</b>	Powder coated: dark beige(04), green(13), cream white(15), bordoux(19), steel olive(26), basalt grey (27)	10%
	Powder coated: according to RAL Colour Chart	20%
	One-sided veneering of the guides – Veneer Colour Chart and turnaround times – see page 2	10%
	Guide extension - lacquered	18,00€/m
	Guide extension - veneered	24,70€/m
<b>Cap for aluminium guides</b>	NPPDO-53 single, powder coated silver(01),white(02),grey(03),light beige(05), light grey(07),dark brown(08),light brown(09),ivory(16),black(20),anthracite(23)	4,60€/rm
	NPPDO-79 double, powder coated silver(01),white(02),grey(03),light beige(05), light grey(07),dark brown(08),light brown(09),ivory(16),black(20),anthracite(23)	6,50€/rm
	Powder coated: dark beige(04), green(13), cream white(15), bordoux(19), steel olive(26), basalt grey (27)	10%
	Powder coated: according to RAL Colour Chart	20%
<b>PZO</b>	Mounting plate for oval guide cap	0,50€/pc.
<b>Bottom lath</b>	Powder coated: dark beige(04), green(13), cream white(15), bordoux(19), steel olive(26), basalt grey (27)	5%
	Powder coated: according to RAL Colour Chart	10%
	Veneering of the bottom lath (color 42 woodec turner oak only) *	5%
<b>Curtain</b>	PA 39 steel anthracite DB703 (24), woodec turner oak only (42), PA 45 woodec turner oak (42)	5%
<b>Tape roller 11m</b>	Refers to roller shutters exceeding 240cm (according to the customer's wish – white or brown)	7,60€/pc.
<b>Cord coiler up to 11m</b>	Refers to roller shutters exceeding 240cm (according to the customer's wish – white or brown)	12,40€/pc.
<b>Rolled mosquito-net</b>	Mesh colours: grey (03), black (20). Colours for bottom lath of mosquito-net: silver (01), white (02), grey (03), light beige (05), light grey (07), dark brown (08), light brown (09), ivory (16), black(20), anthracite (23)	95,00€/pc.
<b>Pleated mosquito-net</b>	Mesh colours: black (20). Colours for profiles of mosquito-net: silver (01), white (02), grey (03) light beige (05), light grey (07), dark brown (08), light brown (09), ivory (16), black(20), anthracite (23)	page: 6.19
<b>Bottom lath of rolled mosquito net, Profiles of pleated mosquito net</b>	Powder coated: dark beige(04), green(13), cream white(15), bordoux(19), steel olive(26), basalt grey (27)	5%
	Powder coated: according to RAL Colour Chart	10%
<b>PRS-500-SPR</b>	Additional charge for a spring for guiding the 500mm cable	1,10€/pc.
<b>ZSKM</b>	End cap for aluminium guide mosquito net channel	1,70€/rm
<b>Case widening</b>	The service of the roller shutter case widening	39,40€/pc.

\* - Completion date up to 15 business days.

# OS2000®

## PA-39, PA-45, PA-52 – aluminium profile 39mm, 45mm, 52 mm (including end caps)

Box size	width 0,35 - 2m, max. surface 6,5m <sup>2</sup>			width 0,35 - 2,5m, max. surface 6,5m <sup>2</sup>			width 0,35 - 3m, max. surface 6,5m <sup>2</sup>			width 0,35 - 3,7m <sup>2</sup> , max. surface 8m <sup>2</sup>	
	Maximum height of shutte (including the box size)/cm			Maximum height of shutte (including the box size)/cm			Maximum height of shutte (including the box size)/cm			Maximum height of shutte (including the box size)/cm	
	with automatic bolt (including the box size)/cm	with blocking hanger (including the box size)/cm		with automatic bolt (including the box size)/cm	with blocking hanger (including the box size)/cm		with automatic bolt (including the box size)/cm	with blocking hanger (including the box size)/cm		with automatic bolt (including the box size)/cm	with blocking hanger (including the box size)/cm
ALUMINIUM	PA-39 ø 40+PZ50	PA-39 ø 40-rygiel	PA-39 ø 40-WB	PA-39 ø 60+PZ70	PA-39 ø 60-rygiel	PA-39 ø 60-WB	PA-45 ø 60+PZ70	PA-45 ø 60-rygiel	PA-45 ø 60-WB	PA-52 ø 60+PZ70	PA-52 ø 60-WB
SK-137	152	152	142	126	126	X	X	X	X	X	X
SK-165	250	250	242	236	236	199	163	168	138	120	
SK-180	306	306	310	294	294	282	214	214	196	190	
SK-205	394	394	402	398	398	359	294	294	270	260	

If the width of roller shutter exceeds 2m, pipe ø 60 is recommended.  
PZ- expansion ring from ø 40 on ø 50 or from ø 60 on ø 70.

### STANDARD

Shutter box	Silver (01), white (02), grey (03), light beige (05), light grey(07), dark brown (08), light brown (09), ivory (16), black(20), anthracite (23)
Guide	Silver (01), white (02), grey (03), light beige (05), light grey(07), dark brown (08), light brown (09), ivory (16), black(20), anthracite (23)
Bottom lath	Silver (01), white (02), grey (03), light beige (05), light grey(07), dark brown (08), light brown (09), ivory (16), black(20), anthracite (23) Veneering of bottom lath - Veneer Colour Chart and turnaround times – see page 2 (except for color 42 woodec turner oak)
Curtain	Colours available for PA 39 (except for the steel anthracite DB703 (24), woodec turner oak(42)), PA 45 (except for the woodec turner oak(42)), PA52 – no additional charge
Tape roller	Possible length for white or brown colour -5mb (up to 240 cm height, up to 12kg)
Hole drilling in the guides	Charge free – according to the customer's wish

### FOR ADDITIONAL CHARGE

Shutter box	Enlargement of the shutter box	5%
	Powder coated: dark beige(04), green(13), cream white(15), bordoux(19), steel olive(26), basalt grey (27)	15%
	Powder coated: according to RAL Colour Chart	30%
Guide	Powder coated: dark beige(04), green(13), cream white(15), bordoux(19), steel olive(26), basalt grey (27)	10%
	Powder coated: according to RAL Colour Chart	20%
	One-sided veneering of the guides – Veneer Colour Chart and turnaround times – see page 2	10%
	Guide extension - lacquered	18,00€/rm
	Guide extension - veneered	24,70€/rm
Cap for aluminium guides	NPPDO-53 single, powder coated silver(01),white(02),grey(03),light beige(05), light grey(07),dark brown(08),light brown(09),ivory(16),black(20),anthracite(23)	4,60€/rm
	NPPDO-79 double, powder coated silver(01),white(02),grey(03),light beige(05), light grey(07),dark brown(08),light brown(09),ivory(16),black(20),anthracite(23)	6,50€/rm
	Powder coated: dark beige(04), green(13), cream white(15), bordoux(19), steel olive(26), basalt grey (27)	10%
	Powder coated: according to RAL Colour Chart	20%
PZO	Mounting plate for oval guide cap	0,50€/pc.
Bottom lath	Powder coated: dark beige(04), green(13), cream white(15), bordoux(19), steel olive(26), basalt grey (27)	5%
	Powder coated: according to RAL Colour Chart	10%
	Veneering of the bottom lath (color 42 woodec turner oak only) *	5%
Curtain	PA 39 steel anthracite DB703 (24), woodec turner oak only (42), PA 45 woodec turner oak (42)	5%
Tape roller 11m	Refers to roller shutters exceeding 240cm (according to the customer's wish – white or brown)	7,60€/pc.
Cord coiler up to 11m	Refers to roller shutters exceeding 240cm (according to the customer's wish – white or brown)	12,40€/pc.
PRS-500-SPR	Additional charge for a spring for guiding the 500mm cable	1,10€/pc.
Case widening	The service of the roller shutter case widening	39,40€/pc.

\* - Completion date up to 15 business days.

# OS2000<sup>®</sup>

## WITH MOSQUITO NET

**PA-39, PA-45 – aluminium profile 39mm and 45mm (including end caps)**

width 0,55 - 1,8m, max. surface 4,5m<sup>2</sup>

Box size	Maximum height of shutter(including the box size)/cm			Maximum height of shutter(including the box size)/cm			Maximum height of shutter(including the box size)/cm		
	with automatic bolt (including the box size)/cm	with blocking hanger (including the box size)/cm	with blocking hanger (including the box size)/cm	with automatic bolt (including the box size)/cm	with blocking hanger (including the box size)/cm	with blocking hanger (including the box size)/cm	with automatic bolt (including the box size)/cm	with blocking hanger (including the box size)/cm	with blocking hanger (including the box size)/cm
ALUMINIUM	PA-39 ø 40+PZ50	PA-39 ø 40-rygiel	PA-39 ø 40-WB	PA-39 ø 60+PZ70	PA-39 ø 60-rygiel	PA-39 ø 60-WB	PA-45 ø 60+PZ70	PA-45 ø 60-rygiel	PA-45 ø 60-WB
SK-137	X	X	X	X	X	X	X	X	X
SK-165	176	152	144	156	156	121	X	X	X
SK-180	224	228	216	200	200	200	X	X	X
SK-205	250	250	250	250	250	250	250	250	250

**Note! If the width of roller shutter exceeds 2m (concerns the shutters with sections), pipe ø 60 is recommended.  
PZ- expansion ring from ø 40 on ø 50 or from ø 60 on ø 70.**

### STANDARD

<b>Shutter box</b>	Silver (01), white (02), grey (03), light beige (05), light grey(07), dark brown (08), light brown (09), ivory (16), black(20), anthracite (23)
<b>Guide</b>	Silver (01), white (02), grey (03), light beige (05), light grey(07), dark brown (08), light brown (09), ivory (16), black(20), anthracite (23)
<b>Bottom lath</b>	Silver (01), white (02), grey (03), light beige (05), light grey(07), dark brown (08), light brown (09), ivory (16), black(20), anthracite (23) Veneering of bottom lath - Veneer Colour Chart and turnaround times – see page 2 (except for color 42 woodec turner oak)
<b>Curtain</b>	Colours available for PA 39 (except for the steel anthracite DB703 (24), woodec turner oak(42)), PA 45 (except for the woodec turner oak(42)) – no additional charge
<b>Tape roller</b>	Possible length for white and brown colour -5 mb (up to 240 cm height, up to 12kg)
<b>Hole drilling in the guides</b>	Charge free – according to the customer's wish

### FOR ADDITIONAL CHARGE

<b>Shutter box</b>	Enlargement of the shutter box	5%
	Powder coated: dark beige(04), green(13), cream white(15), bordoux(19), steel olive(26), basalt grey (27)	15%
	Powder coated: according to RAL Colour Chart	30%
<b>Guide</b>	Powder coated: dark beige(04), green(13), cream white(15), bordoux(19), steel olive(26), basalt grey (27)	10%
	Powder coated: according to RAL Colour Chart	20%
	One-sided veneering of the guides – Veneer Colour Chart and turnaround times – see page 2	10%
	Guide extension - lacquered	18,00€/rm
	Guide extension - veneered	24,70€/rm
<b>Cap for aluminium guides</b>	NPPDO-53 single, powder coated silver(01),white(02),grey(03),light beige(05), light grey(07),dark brown(08),light brown(09),ivory(16),black(20),anthracite(23)	4,60€/rm
	NPPDO-79 double, powder coated silver(01),white(02),grey(03),light beige(05), light grey(07),dark brown(08),light brown(09),ivory(16),black(20),anthracite(23)	6,50€/rm
	Powder coated: dark beige(04), green(13), cream white(15), bordoux(19), steel olive(26), basalt grey (27)	10%
	Powder coated: according to RAL Colour Chart	20%
<b>PZO</b>	Mounting plate for oval guide cap	0,50€/pc.
<b>Bottom lath</b>	Powder coated: dark beige(04), green(13), cream white(15), bordoux(19), steel olive(26), basalt grey (27)	5%
	Powder coated: according to RAL Colour Chart	10%
	Veneering of the bottom lath (color 42 woodec turner oak only) *	5%
<b>Curtain</b>	PA 39 steel anthracite DB703 (24), woodec turner oak only (42), PA 45 woodec turner oak (42)	5%
<b>Tape roller 11m</b>	Refers to roller shutters exceeding 240cm (according to the customer's wish – white or brown)	7,60€/pc.
<b>Cord coiler up to 11m</b>	Refers to roller shutters exceeding 240cm (according to the customer's wish – white or brown)	12,40€/pc.
<b>Rolled mosquito-net</b>	Mesh colours: grey (03), black (20). Colours for bottom lath of mosquito-net: silver (01), white (02), grey (03), light beige (05), light grey (07), dark brown (08), light brown (09), ivory (16), black(20), anthracite (23)	95,00€/pc.
<b>Pleated mosquito-net</b>	Mesh colours: black (20). Colours for profiles of mosquito-net: silver (01), white (02), grey (03), light beige (05), light grey (07), dark brown (08), light brown (09), ivory (16), black(20), anthracite (23)	page: 6.19
<b>Bottom lath of rolled mosquito net, Profiles of pleated mosquito net</b>	Powder coated: dark beige(04), green(13), cream white(15), bordoux(19), steel olive(26), basalt grey (27)	5%
	Powder coated: according to RAL Colour Chart	10%
<b>PRS-500-SPR</b>	Additional charge for a spring for guiding the 500mm cable	1,10€/pc.
<b>ZSKM</b>	End cap for aluminium guide mosquito net channel	1,70€/rm
<b>Case widening</b>	The service of the roller shutter case widening	39,40€/pc.

\* - Completion date up to 15 business days.

# IT2000®

## PA-39, PA-45, PA-52 – aluminium profile 39mm, 45 mm and 52mm (including end caps)

Box size	width 0,35 - 2m, max. surface 6,5m <sup>2</sup>			width 0,35 - 2,5m, max. surface 6,5m <sup>2</sup>			width 0,35 - 3m, max. surface 6,5m <sup>2</sup>			width 0,35 - 3,7m <sup>2</sup> max. surface 8m <sup>2</sup>	
	Maximum height of shutter (including the box size)/cm			Maximum height of shutter (including the box size)/cm			Maximum height of shutter (including the box size)/cm			Maximum height of shutter (including the box size)/cm	
	with automatic bolt (including the box size)/cm	with blocking hanger (including the box size)/cm		with automatic bolt (including the box size)/cm	with blocking hanger (including the box size)/cm		with automatic bolt (including the box size)/cm	with blocking hanger (including the box size)/cm		with blocking hanger (including the box size)/cm	
ALUMINIUM	PA-39 ø 40+PZ50	PA-39 ø 40-rygiel	PA-39 ø 40-WB	PA-39 ø 60+PZ70	PA-39 ø 60-rygiel	PA-39 ø 60-WB	PA-45 ø 60+PZ70	PA-45 ø 60-rygiel	PA-45 ø 60-WB	PA-52 ø 60+PZ70	PA-52 ø 60-WB
SK-137	152	152	142	126	126	X	X	X	X	X	X
SK-165	250	250	242	236	236	199	163	168	138	120	
SK-180	306	306	310	294	294	282	214	214	196	190	
SK-205	394	394	402	398	398	359	294	294	270	260	

If the width of roller shutter exceeds 2m, pipe ø 60 is recommended.

PZ- expansion ring from ø 40 on ø 50 or from ø 60 on ø 70.

IT2000 roller shutters cannot be fitted with an emergency lifting motor - NHK.

In order to avoid deformation of the inspection hatch, it is recommended to use inspection hatch supports above 160 cm wide.

### STANDARD

Shutter box, box sides	Raw aluminium
Inspection hatch, concealed lath	Silver (01), white (02), grey (03), light beige (05), light grey(07), dark brown (08), light brown (09), ivory (16), black(20), anthracite (23)
Guide	Silver (01), white (02), grey (03), light beige (05), light grey(07), dark brown (08), light brown (09), ivory (16), black(20), anthracite (23)
Curtain	Colours available for PA 39 (except for the steel anthracite DB703 (24), woodec turner oak(42)), PA 45 (except for the woodec turner oak(42)), PA52 – no additional charge
Bottom lath	Silver (01), white (02), grey (03), light beige (05), light grey(07), dark brown (08), light brown (09), ivory (16), black(20), anthracite (23) Veneering of bottom lath - Veneer Colour Chart and turnaround times – see page 2 (except for color 42 woodec turner oak)
Tape roller	Possible length for white or brown colour -5mb (up to 240 cm height, up to 12kg)
Hole drilling in the guides	Charge free – according to the customer's wish

### FOR ADDITIONAL CHARGE

Shutter box	Enlargement of the shutter box	5%
Inspection hatch, concealed lath	Powder coated: dark beige(04), green(13), cream white(15), bordoux(19), steel olive(26), basalt grey(27)	15%
	Powder coated: according to RAL Colour Chart	30%
	Veneering– Veneer Colour Chart and turnaround times – see page 2 (except for the quartz grey colour (61))	5%
Guide	Powder coated: dark beige(04), green(13), cream white(15), bordoux(19), steel olive(26), basalt grey(27)	10%
	Powder coated: according to RAL Colour Chart	20%
	One-sided veneering of the guides – Veneer Colour Chart and turnaround times – see page 2	5%
	Guide extension - lacquered	18,00€/mm
	Guide extension - veneered	24,70€/mm
Curtain	PA 39 steel anthracite DB703 (24), woodec turner oak only (42), PA 45 woodec turner oak (42)	5%
Bottom lath	Powder coated: dark beige(04), green(13), cream white(15), bordoux(19), steel olive(26), basalt grey(27)	5%
	Powder coated: according to RAL Colour Chart	10%
	Veneering of the bottom lath (color 42 woodec turner oak only) *	5%
Tape roller 11m	Refers to roller shutters exceeding 240cm (according to the customer's wish – white or brown)	7,60€/pc.
Cord coiler up to 11m	Refers to roller shutters exceeding 240cm (according to the customer's wish – white or brown)	12,40€/pc.
UMIT-137, UMIT-137-20	Mounting bracket for shutter box IT2000: 137, 137 with distance 20 mm	4,70€/pc.
UMIT-165, UMIT-165-20	Mounting bracket for shutter box IT2000: 165, 165 with distance 20 mm	5,10€/pc.
UMIT-180, UMIT-180-20	Mounting bracket for shutter box IT2000: 180, 180 with distance 20 mm	5,70€/pc.
UMIT-205, UMIT-205-20	Mounting bracket for shutter box IT2000: 205, 205 with distance 20 mm	5,90€/pc.
PRS-500-SPR	Additional charge for a spring for guiding the 500mm cable	1,10€/pc.
Case widening	The service of the roller shutter case widening	39,40€/pc.

\* - Completion date up to 15 business days.

# IT2000<sup>®</sup> WITH MOSQUITO NET

**PA-39, PA-45 – aluminium profile 39mm and 45mm (including end caps)**  
width 0,55 - 1,8m, max. surface 4,5m<sup>2</sup>

Box size	Maximum height of shutter (including the box size)/cm			Maximum height of shutter (including the box size)/cm			Maximum height of shutter (including the box size)/cm		
		with automatic bolt (including the box size)/cm	anger (including the box size)/cm		with automatic bolt (including the box size)/cm	anger (including the box size)/cm		with automatic bolt (including the box size)/cm	anger (including the box size)/cm
ALUMINIUM	PA-39 ø 40+PZ50	PA-39 ø 40-rygiel	PA-39 ø 40-WB	PA-39 ø 60+PZ70	PA-39 ø 60-rygiel	PA-39 ø 60-WB	PA-45 ø 60+PZ70	PA-45 ø 60-rygiel	PA-45 ø 60-WB
SK-137	X	X	X	X	X	X	X	X	X
SK-165	176	179	144	156	156	121	X	X	X
SK-180	224	228	216	200	200	200	X	X	X
SK-205	250	250	250	250	250	250	250	250	250

**NOTE!** If the width of roller shutter exceeds 2m (for rollers shutters with sections) pipe ø 60 is recommended.

In IT2000 roller shutter with mosquito net system, it is not possible to use motor with emergency crank.

PZ- expansion ring from ø 40 on ø 50 or from ø 60

IT2000 roller shutters cannot be fitted with an emergency lifting motor - NHK.

In order to avoid deformation of the inspection hatch, it is recommended to use inspection hatch supports above 160 cm wide.

### STANDARD

<b>Shutter box, box sides</b>	Raw aluminium
<b>Inspection hatch, concealed lath</b>	Silver (01), white (02), grey (03), light beige (05), light grey(07), dark brown (08), light brown (09), ivory (16), black(20), anthracite (23)
<b>Guide</b>	Silver (01), white (02), grey (03), light beige (05), light grey(07), dark brown (08), light brown (09), ivory (16), black(20), anthracite (23)
<b>Curtain</b>	Colours available for PA 39 (except for the steel anthracite DB703 (24), woodec turner oak(42)), PA 45 (except for the woodec turner oak(42)) – no additional charge
<b>Bottom lath</b>	Silver (01), white (02), grey (03), light beige (05), light grey(07), dark brown (08), light brown (09), ivory (16), black(20), anthracite (23) Veneering of bottom lath - Veneer Colour Chart and turnaround times – see page 2 (except for color 42 woodec turner oak)
<b>Tape roller</b>	Possible length for white or brown colour -5mb (up to 240 cm height, up to 12kg)
<b>Hole drilling in the guides</b>	Charge free – according to the customer's wish

### FOR ADDITIONAL CHARGE

<b>Shutter box</b>	Enlargement of the shutter box	5%
<b>Inspection hatch, concealed lath</b>	Powder coated: dark beige(04), green(13), cream white(15), bordoux(19), steel olive(26), basalt grey(27)	15%
	Powder coated: according to RAL Colour Chart	30%
	Veneering– Veneer Colour Chart and turnaround times – see page 2 (except for the quartz grey colour (61))	5%
<b>Guide</b>	Powder coated: dark beige(04), green(13), cream white(15), bordoux(19), steel olive(26), basalt grey(27)	10%
	Powder coated: according to RAL Colour Chart	20%
	One-sided veneering of the guides – Veneer Colour Chart and turnaround times – see page 2	5%
	Guide extension - lacquered	18,00€/rm
	Guide extension - veneered	24,70€/rm
<b>Curtain</b>	PA 39 steel anthracite DB703 (24), woodec turner oak only (42), PA 45 woodec turner oak (42)	5%
<b>Bottom lath</b>	Powder coated: dark beige(04), green(13), cream white(15), bordoux(19), steel olive(26), basalt grey(27)	5%
	Powder coated: according to RAL Colour Chart	10%
	Veneering of the bottom lath (color 42 woodec turner oak only) *	5%
<b>Tape roller 11m</b>	Refers to roller shutters exceeding 240cm (according to the customer's wish – white or brown)	7,60€/pc.
<b>Cord coiler up to 11m</b>	Refers to roller shutters exceeding 240cm (according to the customer's wish – white or brown)	12,40€/pc.
<b>Rolled mosquito-net</b>	Mesh colours: grey (03), black (20). Colours for bottom lath of mosquito-net: silver (01), white (02), grey (03), light beige (05), light grey (07), dark brown (08), light brown (09), ivory (16), black(20), anthracite (23)	95,00€/pc.
<b>Pleated mosquito-net</b>	Mesh colours: black (20). Colours for profiles of mosquito-net: silver (01), white (02), grey (03) light beige (05), light grey (07), dark brown (08), light brown (09), ivory (16), black(20), anthracite (23)	page: 6.19
<b>Bottom lath of rolled mosquito net, Profiles of pleated mosquito net</b>	Powder coated: dark beige(04), green(13), cream white(15), bordoux(19), steel olive(26), basalt grey (27)	5%
	Powder coated: according to RAL Colour Chart	10%
<b>ZSKM</b>	End cap for aluminium guide mosquito net channel	1,70€/rm
<b>UMIT-137, UMIT-137-20</b>	Mounting bracket for shutter box IT2000: 137, 137 with distance 20 mm	4,70€/pc.
<b>UMIT-165, UMIT-165-20</b>	Mounting bracket for shutter box IT2000: 165, 165 with distance 20 mm	5,10€/pc.
<b>UMIT-180, UMIT-180-20</b>	Mounting bracket for shutter box IT2000: 180, 180 with distance 20 mm	5,70€/pc.
<b>UMIT-205, UMIT-205-20</b>	Mounting bracket for shutter box IT2000: 205, 205 with distance 20 mm	5,90€/pc.
<b>PRS-500-SPR</b>	Additional charge for a spring for guiding the 500mm cable	1,10€/pc.
<b>Case widening</b>	The service of the roller shutter case widening	39,40€/pc.

\* - Completion date up to 15 business days.



**PRICELIST OF MOTORS  
AND ACCESSORIES  
FOR ROLLER SHUTTERS**

# PRICE LIST OF MOTORS AND CONTROL UNITS

## EXALUS HOME

SMART HOME SYSTEM

www.tr7.pl

INDEX	NAME	PRICE EUR
<b>RADIO MOTORS</b>		
- SSR-BIDI 40/10	- Radio motor EXALUS HOME P&P 40/10 *	131,20 €
- SSR-BIDI 60/10	- Radio motor EXALUS HOME P&P 60/10 *	133,90 €
- SSR-BIDI 60/20	- Radio motor EXALUS HOME P&P 60/20 *	136,70 €
<b>CONTROL ELEMENTS</b>		
- TR7	- Control unit - smart house manager	349,90 €
<b>RADIO TRANSMITTERS</b>		
- PX-BIDI	- 1-channel remote (1 W) *	49,40 €
- NX-BIDI	- 12-channel remote (1 W) *	57,70 €
- NX-BIDI PRO	- 16-channel remote LCD + timer *** <b>NEW</b>	109,00 €
- RNP-21	- Flush-mounted radio transmitter (230 V)	56,30 €
- RNP-22	- Flush-mounted radio transmitter (battery-powered)	51,70 €
- DEL-1	- 2-channel scenario manager with temperature sensor (white) **	70,30 €
- 12DEL-1	- 2-channel scenario manager with temperature sensor (black) **	70,30 €
- DEL-2	- 4-channel scenario manager with temperature sensor (white) **	77,10 €
- 12DEL-2	- 4-channel scenario manager with temperature sensor (black) **	77,10 €
<b>FLUSH RECEIVERS/ CONTROLLERS</b>		
- EX-BIDI	- Radio flush-mounted shutter controller	64,90 €
- ROP-21	- Radio 1-channel flush receiver	75,20 €
- ROP-22	- Radio 2-channel flush receiver	77,50 €
- RDP-21	- Radio dimmer	79,20 €
- REP-21	- Radio signal retransmitter	74,10 €
- ROB-21	- Radio rolling gates receiver <b>NEW</b>	97,60 €
<b>MOTOR SETUP CABLE</b>		
- 9020579	- Universal setup cable (five-wire) cable for - IO, RTS, WT, SSR-BIDI <b>NEW</b>	138,80 €

\* - Set (adapter, carrier, hangers, hook locks)  
Hangers, hook locks, handle included with the motor only in the finished product  
\*\* - Product for special order  
\*\*\* - Does not support time scenarios in VB-BIDI



TR7 - Control unit - smart home manager

PX-BIDI - 1-channel remote

NX-BIDI PRO - Pilot 16-kanalowy LCD + timer

DEL-1 - 2-kanalowy menadżer scenariuszy z czujnikiem temperatury

### TUBULAR MOTOR HOISTING CAPACITY - SSR-BIDI

	Moc silnika ( Nm )	Roller shutter hoisting capacity:					Minimum rollershutter widths			Motor length
		ø40		ø60			External roller shutters	Top-mounted roller	Minimum length ofRKS tube	
		up to 3 m	up to 4 m	up to 2 m	up to 3 m	up to 4 m				
SSR-BIDI 40/10	10 Nm	12 kg	10 kg	-	-	-	80 cm	85 cm	-	605 mm
SSR-BIDI 60/10	10 Nm	-	-	18 kg	16 kg	14 kg	85 cm	80 cm*	74 cm	635 mm
SSR-BIDI 60/20	20 Nm	-	-	36 kg	33 kg	30 kg	85 cm	80 cm*	74 cm	635 mm

\* minimum width using RKS mounting

Items presented above are not a standard equipment. They have to be additionally listed in every order.

# PRICE LIST OF MOTORS AND CONTROL UNITS

**KARLIK**

**EXALUS  
HOME**

**NEW**

SMART HOME SYSTEM  
www.tr7.pl

<i>INDEX</i>	<i>NAME</i>	<i>PRICE EUR</i>
<b>WIRED CONTROL SYSTEM EXCLUSIVE</b>		
- DWP-4.1	- Monostable bell push (white) <b>NEW</b>	14,60 €
- 12DWP-4.1	- Monostable bell push (black) <b>NEW</b>	14,60 €
- DWP-88	- Bistable flush-mounted shutter push button (white) <b>NEW</b>	21,90 €
- 12DWP-88	- Bistable flush-mounted shutter push button (black) <b>NEW</b>	21,90 €
- DWP-8	- Monostable flush-mounted shutter push button (white) <b>NEW</b>	20,70 €
- 12DWP-8	- Monostable flush-mounted shutter push button (black) <b>NEW</b>	20,70 €
- DR-1	- Single frame (white) <b>NEW</b>	5,10 €
- 12DR-1	- Single frame (black) <b>NEW</b>	5,10 €
- DR-2	- Double frame (white) <b>NEW</b>	7,00 €
- 12DR-2	- Double frame (black) <b>NEW</b>	7,00 €
- DR-3	- Triple frame (white) <b>NEW</b>	8,30 €
- 12DR-3	- Triple frame (black) <b>NEW</b>	8,30 €
- DR-4	- Quadruple frame (white) <b>NEW</b>	10,10 €
- 12DR-4	- Quadruple frame (black) <b>NEW</b>	10,10 €
- DR-5	- Quintuple frame (white) <b>NEW</b>	12,10 €
- 12DR-5	- Quintuple frame (black) <b>NEW</b>	12,10 €
- DPU-1	- Surface-mounted frame (white) <b>NEW</b>	8,70 €
- 12DPU-1	- Surface-mounted frame (black) <b>NEW</b>	8,70 €

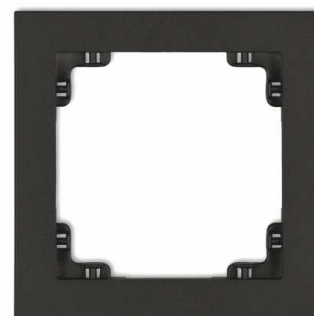
*All aforementioned products make part of the KARLIK company system.*



12DWP-4.1 - Monostable bell push



12DWP-88 - Bistable flush-mounted  
shutter push button

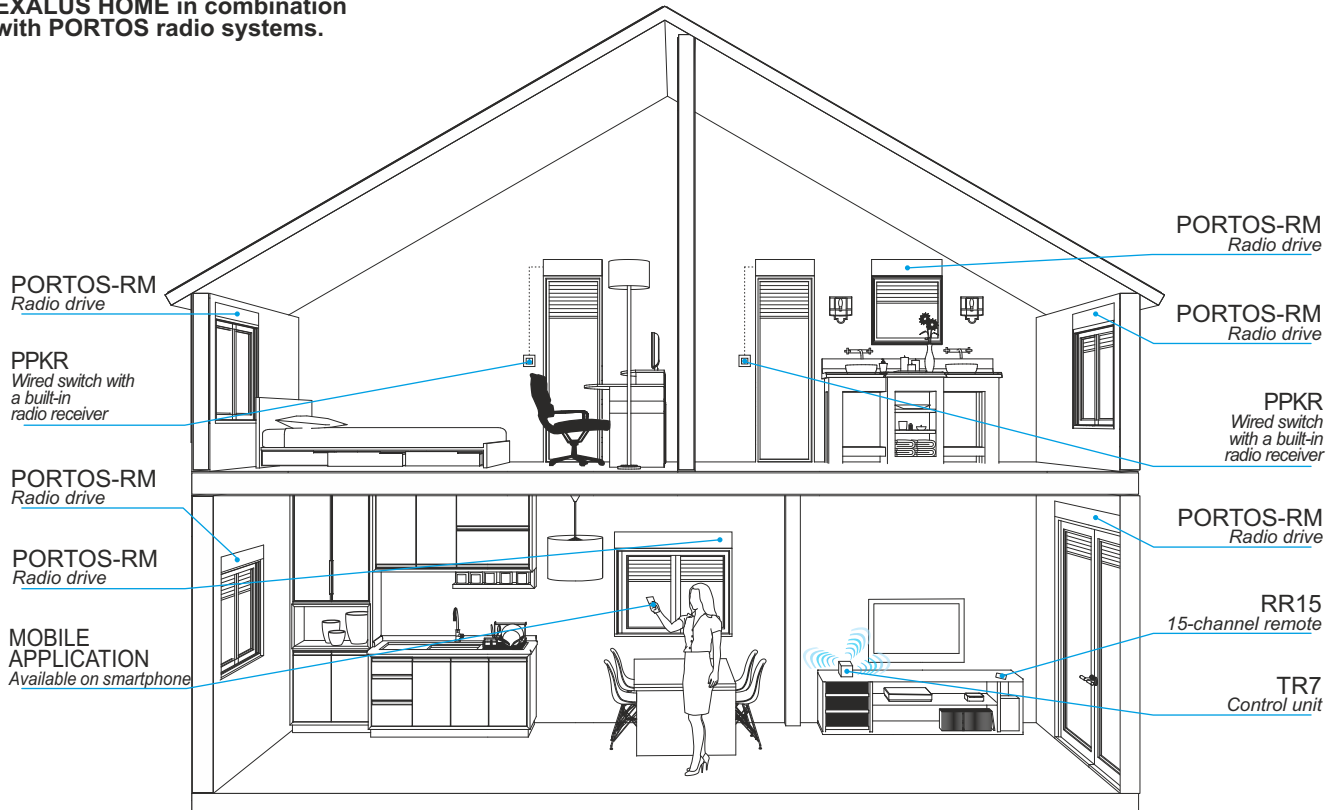


12DR-1 - Single frame

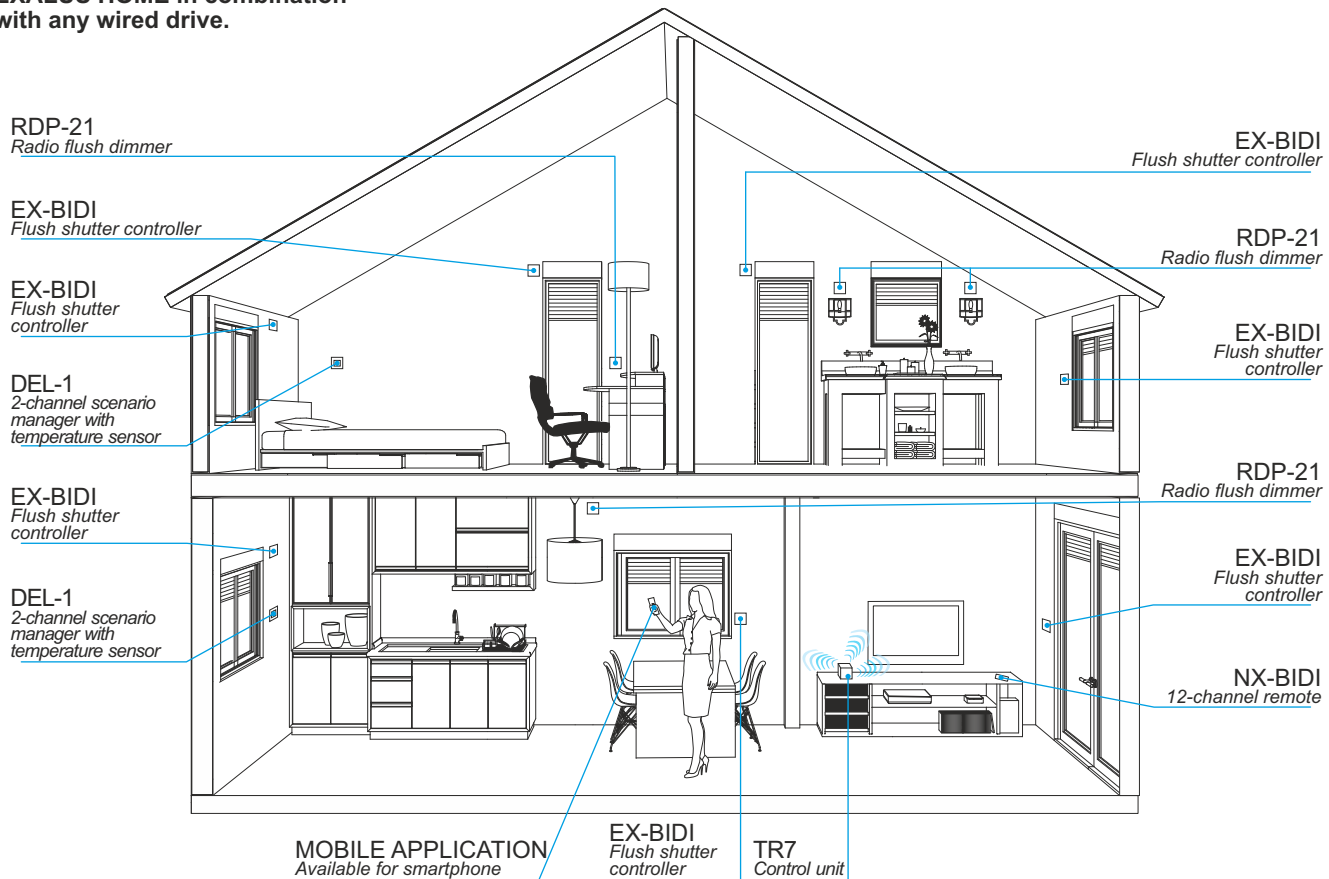
# EXALUS HOME

SMART HOME SYSTEM  
www.tr7.pl

EXALUS HOME in combination  
with PORTOS radio systems.



EXALUS HOME in combination  
with any wired drive.



# TUBULAR MOTORS FOR ROLLER SHUTTERS PORTOS MOTORS

INDEX	NAME	PRICE EUR
<b>PORTOS MOTORS</b>		
- S-40/10	- Motor 10 Nm for octagonal pipe 40 mm	56,20/Stück
- S-40/10 S	- Motor 10 Nm for octagonal pipe 40 mm – small, lenght - 37cm	60,10/Stück
- S-60/10	- Motor 10 Nm for octagonal pipe 60 mm	56,20/Stück
- S-60/20	- Motor 20 Nm for octagonal pipe 60 mm	61,50/Stück
- S-60/30	- Motor 30 Nm for octagonal pipe 60 mm	63,70/Stück
- S-60/40	- Motor 40 Nm for octagonal pipe 60 mm	66,90/Stück
- S-60/50	- Motor 50 Nm for octagonal pipe 60 mm	71,00/Stück
- S-60/10 S	- Motor 10 Nm for octagonal pipe 60 mm - small, lenght - 48 cm	70,00/Stück
- S-40/10 BD	- Motor with overload system 10 Nm - for octagonal pipe ø 40 *****	91,40/Stück
- S-60/10 BD	- Motor with overload system 10 Nm - for octagonal pipe ø 60 *****	93,80/Stück
- S-60/20 BD	- Motor with overload system 20 Nm - for octagonal pipe ø 60 *****	101,90/Stück
<b>RADIO PORTOS MOTORS</b>		
- S-40/10 RM	- Radio motor 10 Nm for octagonal pipe 40 mm	85,40/Stück
- S-60/10 RM	- Radio motor 10 Nm for octagonal pipe 60 mm	88,40/Stück
- S-60/20 RM	- Radio motor 20 Nm for octagonal pipe 60 mm	90,60/Stück
- S-60/30 RM	- Radio motor 30 Nm for octagonal pipe 60 mm	93,60/Stück
- S-40/10 EVY	- Radio motor with overload system 10 Nm - for octagonal pipe ø 40 *****	97,70/Stück
- S-60/10 EVY	- Radio motor with overload system 10 Nm - for octagonal pipe ø 60 *****	102,20/Stück
- S-60/20 EVY	- Radio motor with overload system 20 Nm - for octagonal pipe ø 60 *****	110,10/Stück
<b>PORTOS MOTORS NHK</b>		
- S-60/20 NHK#427	- Motor 20 Nm NHK for octagonal pipe 60 mm*	97,70/Stück
- S-60/30 NHK#427	- Motor 30 Nm NHK for octagonal pipe 60 mm*	102,30/Stück
- TZU-S	- Eye kit for NHK motors	19,30/Stück
- KRH-150	- Crank with a Hook 150cm	24,10/Stück
- KRH-180	- Crank with a Hook 180cm	31,10/Stück
<b>SOLAR MOTORS</b>		
- S-SOLAR 40/13 RM	- Solar motors DC 13 Nm with radio - for steel shaft ø 40	216,70/Stück
- S-SOLAR 60/20 RM	- Solar motors DC DC 20 Nm with radio - for steel shaft ø 60	229,50/Stück
- S-PANEL-SOLAR-	- Solar panel for S-SOLAR series solar motors	66,90 €/Stück
- S-SOLAR ŁADOWARKA	- Charger for S-SOLAR series solar motors	17,50 €/Stück
<b>ACCESSORIES</b>		
- PMX1	- Bell button (monostable)	17,00 €/Stück
- PKLX2N	- Surface-mounted key-turn switch	55,70 €/Stück
- PKLX2	- Flush-mounted key-turn switch	55,70 €/Stück
- PBX2N	- Surface-mounted shutter switch (bistable)	24,90 €/Stück
- PMX2N	- Surface-mounted shutter button (monostable)	24,90 €/Stück
- PBX2	- Flush-mounted shutter switch (bistable)	18,50 €/Stück
- PMX2	- Flush-mounted shutter button (monostable)	18,50 €/Stück
- RX1N	- Surface-mounted frame	6,60 €/Stück
- RX2	- Double frame	6,60 €/Stück
- RX3	- Triple frame	10,30 €/Stück
- RX4	- Quadruple frame	15,70 €/Stück
- PS-1	- 1-channel keychain remote control	45,50 €/Stück
- PS-1T	- 1-channel electronic switch with Timer	60,00 €/Stück
- PS-2	- 2-channel electronic switch	48,00 €/Stück
- PE-2	- 2-channel electronic switch ***	45,30 €/Stück
- SIR	- Flush-mounted relay **, *****	35,40 €/Stück
- ST4	- 4-roller shutters controller **	41,50 €/Stück
<b>RADIO RECEIVERS</b>		
- PPKR 313	- Switch with integrated radio receiver only for non radio motors	54,20 €/Stück
- PPKR 313/2	- Double electronic switch with a built-in radio receiver	62,90 €/Stück
- XT-R	- Flush-mounted receiver **, *****	47,40 €/Stück

- \* - For the appropriate working of motor with emergency lifting mechanism, it is necessary to use crank with a hook KRH-150.  
 \*\* - Possibility of connection only electronic switch with non-support mode and blockade to launch direction buttons simultaneously.  
 \*\*\* - Product available until in stock  
 \*\*\*\*\* - The controller can be used only with drives with torque up to 10Nm.  
 \*\*\*\*\* - Set (i.e. handle, adapter, carrier, hook lock hangers). Hook lock hangers are included with the engine only in the finished product.

**Caution! Do not use an emergency lifting mechanism if motor is electrified. Motors with emergency lifting mechanism are not available with IT2000 system. Items presented above are not a standard equipment. They have to be additionally listed in every order.**

# TUBULAR MOTORS FOR ROLLER SHUTTERS PORTOS MOTORS

<i>INDEX</i>	<i>NAME</i>	<i>PRICE EUR</i>
<b>ACCESSORIES - BASIC</b>		
- RR-1	- 1-channel remote control	27,00 €/Stück
- RR-5	- 5-channel remote control	30,70 €/Stück
- RR-5T	- 5-channel remote control with Timer	38,90 €/Stück
- RR-15	- 15-channel remote contro	35,30 €/Stück
- PRN1	- 1-channel radio switch	23,40 €/Stück
- PEN2	- 2-channel remote control *	25,20 €/Stück
- PRN2	- 2-channel remote control	25,20 €/Stück
- PRN-5T	- 5-channel radio switch with Timer	38,30 €/Stück
- PRN-15	- 15-channel radio switch	34,90 €/Stück
- SXR	- Sun sensor	31,00 €/Stück
<b>ACCESSORIES - EXCLUSIVE</b>		
- DC-1	- 1-channel remote control	50,70 €/Stück
- DC-5T	- 5-channel remote control + timer	53,40 €/Stück
- DC-15	- 15-channel remote control	57,50 €/Stück
- PX-1	- 1-channel remote control *	40,40 €/Stück
<b>SONNENSCHUTZAUTOMATIK</b>		
- SRR-15+ -	15-channel remote control for solar motors NEW	37,20 €/Stück
- SRR-5T+ -	5-channel remote control with timer for solar motors NEW	39,10 €/Stück
- SPRN-1+ -	1-channel wall transmitter for solar motors NEW	33,50 €/Stück

\* - product available until in stock



*DC-1 - channel remote control*



*DC-5T - 5-channel remote control with Timer*



*SXR - Sun sensor*

# TUBULAR MOTORS FOR ROLLER SHUTTERS PORTOS MOTORS

	Motor power ( Nm )	Roller shutter hoisting capacity					Minimum roller shutter widths		
		ø40		ø60			External roller shutters	Top-mounted roller shutters	Minimum length of RKS tube
		up to 3 m	up to 4 m	up to 2 m	up to 3 m	up to 4 m			
S 40/10 S	10 Nm	10 kg	8 kg	-	-	-	52 cm	57 cm	-
S 40/10	10 Nm	12 kg	10 kg	-	-	-	62 cm	67 cm	-
S 40/10 RM	10 Nm	12 kg	10 kg	-	-	-	78 cm	83 cm	-
S 60/10 S	10 Nm	-	-	18 kg	16 kg	14 kg	42 cm**	56 cm	51 cm *
S 60/10	10 Nm	-	-	18 kg	16 kg	14 kg	68 cm	63 cm *	63 cm
S 60/10 RM	10 Nm	-	-	18 kg	16 kg	14 kg	83 cm	78 cm *	70 cm
S 60/20	20 Nm	-	-	36 kg	33 kg	30 kg	68 cm	63 cm *	63 cm
S 60/20 RM	20 Nm	-	-	36 kg	33 kg	30 kg	83 cm	78 cm *	70 cm
S 60/30	30 Nm	-	-	54 kg	49 kg	45 kg	75 cm	70 cm *	68 cm
S 60/30 RM	30 Nm	-	-	54 kg	49 kg	45 kg	85 cm	80 cm *	75 cm
S 60/20 NHK#427	20 Nm	-	-	36 kg	33 kg	30 kg	83 cm	78 cm *	-
S 60/30 NHK#427	30 Nm	-	-	54 kg	49 kg	45 kg	85 cm	80 cm *	-
S 40/10 BD	10 Nm	12 kg	10 kg	-	-	-	80 cm	85 cm	-
S 60/10 BD	10 Nm	-	-	18 kg	16 kg	14 kg	85 cm	80 cm*	74 cm
S 60/20 BD	20 Nm	-	-	36 kg	33 kg	30 kg	85 cm	80 cm *	74 cm
S 40/10 EVY	10 Nm	12 kg	10 kg	-	-	-	80 cm	85 cm	-
S 60/10 EVY	10 Nm	-	-	18 kg	16 kg	14 kg	85 cm	80 cm*	74 cm
S 60/20 EVY	20 Nm	-	-	36 kg	33 kg	30 kg	85 cm	80 cm *	74 cm
S-SOLAR 40/13RM	13 Nm	22 kg	18 kg	-	-	-	83 cm	88 cm	-
S-SOLAR 60/20RM	20 Nm	-	-	36 kg	33 kg	30 kg	75 cm**	88 cm	78 cm *

\* - if a short RKS cap is installed

\*\* - if an OBS-60-S-ALU cap is installed

## EXAMPLE:

A roller shutter with profile PA-39 mm has the dimensions of 1.5 × 2.0 m. It means that the surface of the profile is 3,00 m<sup>2</sup> (1.5 m × 2 m = 3 m<sup>2</sup>). This value should be multiplied by the weight of 1 square meter of profile PA39 mm, which is 2.8 kg (3 × 2.8 kg=8.4 kg). The height of roller shutter is above 2 m, the hoisting capacity is 8.4 kg, for pipe O 40, motor 40/10 should be chosen, whereas for pipe O 60, motor 60/10 should be chosen.



**CAUTION:** When choosing a motor you should remember about the weight of 1 m<sup>2</sup> of the profile, which is indicated below:

PA-39 mm\*: 2,8 kg/m<sup>2</sup>

PA-45 mm: 2,9 kg/m<sup>2</sup>

PA-52 mm: 3,0 kg/m<sup>2</sup>

+ 20 % additional

\* + 0 % additional

**CAUTION!** The manuals for connecting the motors to power supply are included in the assembly and 'operating instructions for the tubular motor' and section (only qualified and authorized electricians may carry out the connections).

When mounting the radio motors with electronic or mechanical limit system, in accordance with current standards the voltage 230V 50 Hz is required. In the case of deviations from these values, we recommend to use components for overvoltage protection B-C, and D.

# PRICE LIST OF MOTORS AND CONTROL UNITS



Italians since 1980

A BRAND OF SOMFY GROUP

INDEX	NAME	PRICE IN Euro
<b>Elektromotoren LP&amp;P Plug&amp;Play - für Oktogonalwelle 60 mm:</b>		
VOLTA 50 PP 6/17	Motor P&P 6 Nm *	120,10 €
VOLTA 50 PP 10/17	Motor P&P 10 Nm *	120,10 €
VOLTA 50 PP 20/17	Motor P&P 20 Nm *,**	132,10 €
<b>Funkmotoren LP&amp;S-R Plug&amp;Play - für Oktogonalwelle 60 mm:</b>		
MARCONI 50 PS 6/17	Funkmotoren P&P 6 Nm *	129,50 €
MARCONI 50 PS 10/17	Funkmotoren P&P 10 Nm *	134,70 €
MARCONI 50 PS 20/17	Funkmotoren P&P 20 Nm *,**	136,90 €
<b>Wandsender:</b>		
Go-p1 Elegance W	Wandsender / 1-Kanal weiß	40,60 €
Go-p1 Elegance B	Wandsender / 1-Kanal schwarz	40,60 €
<b>Handsender:</b>		
Go-4K	4-Kanal mini transmitter **** <i>NEW</i>	39,60 €
Go-1 Elegance W	1-Kanal Handsender weiß	39,40 €
Go-1 Elegance B	1-Kanal Handsender schwarz	39,40 €
Go-4 Elegance W	4-Kanal Handsender weiß	46,10 €
Go-4 Elegance B	4-Kanal Handsender schwarz	46,10 €
Go-16 Elegance W	16-Kanal Handsender weiß	111,80 €
Go-16 Elegance B	16-Kanal Handsender schwarz	111,80 €
Go-6T W	6-Kanal Handsender mit Zeitschaltuhr weiß	104,60 €
Go-6T B	6-Kanal Handsender mit Zeitschaltuhr schwarz	104,60 €
<b>Funkempfänger:</b>		
Go-er platine	Funk-Empfänger für bedrahtete Antriebe ***	87,50 €
Go-ER Mini	Micro receiver for wired motors <i>NEW</i>	83,40 €
Go-ER Mini Light	Radio micro light receiver <i>NEW</i>	83,90 €
<b>Solar automatics:</b>		
Sun-ER	Wireless sun and temperature sensor *****	144,20 €



Go-4K - Mini transmitter



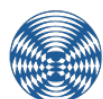
Go-ER Mini - Micro receiver for wired motors



Go-ER Mini Light - Radio micro light receiver



Sun-ER - Wireless sun and temperature sensor



**BECKER**

<b>Elektromotoren - für Oktogonalwelle 60 mm:</b>		
R 4-17-M17	Motor (kurz)	161,90 €

- \* - Satz (d.h. Motor, Halter, Adapter, Hochschiebesicherung).
- \*\*\* - Produkt auf Sonderbestellung.
- \*\*\*\* - Nicht in Verbindung mit den Motoren ILMO 50 S WT 6/17, Oximo S Auto RTS 6/17 verwenden. Keine Möglichkeit der Montage im Vorbaurolladen mit SK-137, SK-150 und Aufsatzrolladen CC1000 mit PSK-135.
- \*\*\*\*\* - Dieser kann nicht als einziger Sender für Bedienung des Funkantriebs eingesetzt werden – zum Programmieren der Anlage muss ein anderer Sender aus dem Angebot verwendet werden.
- \*\*\*\*\* - Solange der Vorrat reicht.

# PRICE LIST OF MOTORS AND CONTROL UNITS



	Nenn Drehmoment ( Nm )	Zugkraft des Antriebes bei der Höhe des Rollladens bis:						Motorlänge	Min. Breite des Rollladens:	
		ø60							External roller shutters	Top-mounted roller shutters
		bis 1,5 m	bis 1,5 m + WB	bis 2,5 m	bis 2,5 m + WB	bis 3,5 m	bis 3,5 m + WB			
<b>VOLTA 50 PP 6/17</b>	6 Nm	-	11 kg	-	10 kg	-	9 kg	525 mm	55,7 cm - 59,6 cm * 59,7 cm *** 69,7 cm	59,7 cm - 63,6 cm * 63,7 cm ** 73,7 cm
<b>VOLTA 50 PP 10/17</b>	10 Nm	-	19 kg	-	18 kg	-	16 kg	525 mm	55,7 cm - 59,6 cm * 59,7 cm *** 69,7 cm	59,7 cm - 63,6 cm * 63,7 cm ** 73,7 cm
<b>VOLTA 50 PP 20/17</b>	20 Nm	-	38 kg	-	37 kg	-	34 kg	598 mm	67,7 cm *** 79,7 cm	71,7 cm ** 82,7 cm
<b>MARCONI 50 PS 6/17</b>	6 Nm	-	14 kg	-	11 kg	-	9 kg	585 mm	62 cm - 65,9 cm * 66 cm *** 77 cm	66 cm - 69,9 cm * 70 cm ** 80 cm
<b>MARCONI 50 PS 10/17</b>	10 Nm	-	19 kg	-	18 kg	-	16 kg	585 mm	62 cm - 65,9 cm * 66 cm *** 77 cm	66 cm - 69,9 cm * 70 cm ** 80 cm
<b>MARCONI 50 PS 15/17</b>	15 Nm	-	30 kg	-	28 kg	-	24 kg	608 mm	68 cm *** 79 cm	72 cm ** 82 cm
<b>MARCONI 50 PS 20/17</b>	20 Nm	-	39 kg	-	36 kg	-	32 kg	608 mm	68 cm *** 79 cm	72 cm ** 82 cm
<b>R 4-17-M17 BECKER</b>	4 Nm	-	9 kg	-	8 kg	-	7 kg	365 mm	45 cm *** 60 cm	56 cm ** 61 cm

For roller shutters with PA-39 armor, we do not select a motor stronger than 10Nm

\* - cap for SW60 + very short pipe crown (art. 9 014 685)

\*\* - minimum width using RKS mounting

\*\*\* - minimum width using OBS-60-S-ALU mounting

## EXAMPLE:

A roller shutter with profile PA-39 mm has the dimensions of 230 cm × 250 cm. It means that the surface of the profile is 5,75 m<sup>2</sup>. This value should be multiplied by the weight of 1 square meter of profile PA39 mm, which is 2,8 kg (5,75 × 2,8 kg=16,1 kg). The height of roller shutter is above 2,3 m, for pipe ø 60, motor VOLTA 50 PP 10/17 should be chosen.

**CAUTION:** When choosing a motor you should remember about the weight of 1 m<sup>2</sup> of the profile, which is indicated below:

**PA-39 mm\*:** 2,8 kg/m<sup>2</sup>

**PA-45 mm:** 2,9 kg/m<sup>2</sup>

**PA-52 mm:** 3,0 kg/m<sup>2</sup>

+ 20 % safety stock

\* + 0 % safety stock

**CAUTION!** The manuals for connecting the motors to power supply are included in the assembly and 'operating instructions for the tubular motor' and section (only qualified and authorized electricians may carry out the connections).

When mounting the radio motors with electronic or mechanical limit system, in accordance with current standards the voltage 230V 50 Hz is required. In the case of deviations from these values, we recommend to use components for overvoltage protection B-C, and D.

# PRICE LIST OF MOTORS AND CONTROL UNITS



INDEX	NAME	PRICE IN Euro
<b>SERIES LS 40 - for octagonal pipe 40mm</b>		
1021387	NL40 LS 4/16 *	157,30 €
1021376	NL40 LS 4/14 - short - 414 mm*	178,90 €
1023336	NL40 LS 9/16 *	196,20 €
1024186	NL40 LS 13/10 *	191,40 €
<b>SERIES LT 50 - for octagonal pipe 60 mm</b>		
1032049	LT 50 Ariane 6/17 *	172,20 €
1037061	LT 50 Jet 10/17 *	204,20 €
1039054	LT 50 Atlas 15/17 *	211,70 €
1041055	LT 50 Meteor 20/17 *	224,70 €
1043041	LT 50 Gemini 25/17 *	238,40 €
1049064	LT 50 Mariner 40/17 *	299,90 €
1051029	LT 50 Vectran 50/12*	385,90 €
<b>SOLUS 40 - for octagonal pipe 40 mm</b>		
1023321	Solus 40 4/16 *	138,90 €
<b>SOLUS 2 - for octagonal pipe 60 mm</b>		
1032574	Solus 2 PA 6/12*	105,50 €
1035183	Solus 2 PA 8/12*	107,30 €
1037592	Solus 2 PA 10/12*	122,10 €
1039504	Solus 2 PA 15/12*	120,20 €
1041535	Solus 2 PA 20/12*	130,20 €
1045455	Solus 2 PA 30/12*	201,50 €
1049886	Solus 2 PA 40/12*	233,80 €
<b>SERIES LT 50 NHK with emergency lifting crank - for octagonal pipe 60 mm</b>		
1037004	LT 50 Jet 10/17 NHK*	239,00 €
1041015	LT 50 Meteor 20/17 NHK*	276,50 €
1043005	LT 50 Gemini 25/17 NHK*	288,30 €
1049019	LT 50 Mariner 40/17 NHK*	333,40 €
<b>SERIES ILMO2 50 NHK WT with emergency lifting crank - for octagonal pipe 60 mm</b>		
1241387	Ilmo2 50 NHK WT 10/17*	350,00 €
1241388	Ilmo2 50 NHK WT 20/17*	399,80 €
<b>ILMO WT - ELECTRONIC MOTOR WITH OVERLOAD SYSTEM "Plug &amp; Play" - for octagonal pipe 40 mm</b>		
<b>For proper operation, it is required to use hangers latches and buffers in the bottom bar</b>		
1130524	ILMO 2 40 WT 4/16 *	164,20 €
1130526	ILMO 2 40 WT 9/16 *	185,90 €
1130528	ILMO 2 40 WT 13/10 *	201,10 €
<b>ILMO WT - ELECTRONIC MOTOR WITH OVERLOAD SYSTEM "Plug &amp; Play" - for octagonal pipe 60 mm</b>		
<b>For proper operation, it is required to use blocking hangers and buffers in the bottom lath bumper in bottom lath.</b>		
1246353	ILMO 3 50 WT 6/17 *	180,40 €
1130127	ILMO 50 S WT 6/17 - short - only 375mm *, **, ***	216,80 €
1130492	ILMO 2 50 WT 10/17 *	161,20 €
1131261	ILMO 2 50 WT 15/17 *	195,80 €
1132191	ILMO 2 50 WT 20/17 *	213,50 €
1133001	ILMO 50 WT 30/17 *	231,80 €
9014685	Adapter of SW 60 + short crown	14,10 €
<b>OXIMO WT - MOTOR WITH OVERLOAD SYSTEM- CABLE VERSION - to octagonal pipe 60 mm</b>		
<b>For proper operation, it is required to use blocking hangers</b>		
1032578	Oximo WT 6/17 *	205,30 €
1037582	Oximo WT 10/17 *	222,90 €
1039493	Oximo WT 15/17 *	232,80 €
1041529	Oximo WT 20/17 *	245,70 €
1045446	Oximo WT 30/17 *	390,60 €
1049541	Oximo WT 40/17 *	438,70 €

\* - the motor set does not include a holder, adapter and crown

# PRICE LIST OF MOTORS AND CONTROL UNITS



<i>INDEX</i>	<i>NAME</i>	<i>PRICE IN Euro</i>
<b>OXIMO RTS - RADIO MOTOR WITH OVERLOAD SYSTEM - for octagonal pipe 60 mm</b>		
<b>For proper operation, it is required to use blocking hangers</b>		
1032392	Oximo RTS 6/17 *	277,80 €
1130128	Oximo S Auto RTS 6/17 - short - only 375 mm *,**	217,50 €
1037389	Oximo RTS 10/17 *	207,40 €
1039299	Oximo RTS 15/17 *	218,70 €
1041380	Oximo RTS 20/17 *	301,90 €
1045319	Oximo RTS 30/17*	423,40 €
9014685	Adapter of SW 60 + short crown	14,10 €
<b>ALTUS 40 RTS - RADIO VERSION - for octagonal pipe 40 mm</b>		
1021343	NL40 Altus 40 RTS 4/16 *	230,50 €
1023297	NL40 Altus 40 RTS 9/16 *	249,90 €
1024179	NL40 Altus 40 RTS 13/10 *	330,80 €
<b>ALTUS 50 RTS - RADIO VERSION - for octagonal pipe 60 mm</b>		
1032916	Altus 50 RTS 6/12 *	194,40 €
1037825	Altus 50 RTS 10/12 *	198,00 €
1041784	Altus 50 RTS 20/12 *	222,20 €
1045612	Altus 50 RTS 30/12 *	371,90 €
1049707	Altus 50 RTS 40/12 *	359,30 €
<b>LT 50 NHK SERIES WITH BUILT-IN RTS 2 RECEIVER - for octagonal pipe 60 mm</b>		
1037030	LT 50 Jet 10/17 NHK RTS 2 *	346,30 €
1041023	LT 50 Meteor 20/17 NHK RTS 2 *	376,90 €
1045307	LT 50 Apollo 30/17 NHK RTS 2 *	544,80 €
<b>OXIMO 40 WireFree RTS - AUTONOME FUNKMOTOREN MIT SOLARVERSORGUNG</b>		
1025165	Satz OXIMO 40 WF RTS II 10/12, Adaptersatz ø40, Akku ohne Gehäuse ****	576,60 €
9019791	Wandhalterungen für neuen Sonnenkollektor (Verkauf im Zweierset - Paar)	14,90 €
9019795	Ersatzakku für Oximo 40 Wirefree RTS ohne Gehäuse	196,20 €
9021207	Ersatzakku für Oximo 40 Wirefree im Alu-Gehäuse	274,70 €
<b>ZUSÄTZLICHE ELEMENTE</b>		
AD-LS40	Adapter of LS40 motor E-SW 40x0,6 - somfy	1,80 €
ZB-LS40	Crown of LS40 motor SW 40x0,6 - somfy	3,20 €
U-LS40	Universal bracket for LS40 - somfy	11,10 €
AD-LT50	Adapter of LT50 motor E-SW 60 - somfy	3,10 €
ZB-LT50	Crown of LT50 motor E-SW 60 - somfy	3,40 €
US-PADS60	Bracket for ASA, DELUX, SOMFY	2,50 €
S-BR-US-NHK	Bracket NHK somfy	19,40 €

\* - the motor set does not include a holder, adapter and crown

\*\* - their is no possibility of mounting the motor in roller shutters: SK-137, SK-150 as well as in roller shutter CC1000 - PSK-135

\*\*\* - product available until in stock

\*\*\*\* - solar panel, battery and curtain for self-assembly; extra charge for packing loose curtain not installed in the roller shutter  
€ 12.50 net/pc., net amount after discount

# PRICE LIST OF MOTORS AND CONTROL UNITS



INDEX	NAME	PRICE IN Euro
<b>INTEO Series</b>		
<b>UNO switches</b>		
1800508	Smooove UNO WT switch (support mode)	34,00 €
1800509	Smooove Uno WT (non-support mode)	24,90 €
1800506	Smooove Duo WT (support mode)	33,20 €
1800507	Smooove Duo WT (non-support mode)	48,50 €
1800012	Inis Uno T switch (non-support mode)*	18,90 €
1800192	Inis Duo switch (support mode)*	26,10 €
1800025	Inis Duo T switch (non-support mode)*	26,10 €
9001244	Obudowa natynkowa do Inis Uno oraz Inis Duo*	6,80 €
<b>SWITCHES, IP 65 WATERPROOF</b>		
1800008	Push-button switch with a support mode, waterproof, onplaster, grey	40,80 €
1800007	Push-button switch with a non-support mode, waterproof, onplaster, grey	40,80 €
1800244	Key switch with non-support mode, on plaster	83,50 €
1871149	Key switch with non-support mode, under plaster*	124,20 €
1871150	Kay swich with a support mode, on plaster	122,10 €
1800247	Kay switch with a support mode, under plaster	120,10 €
<b>MOTOR SETUP CABLE</b>		
9015971	Universal setup cable for io/RTS/WT/LT/LS/Solus/J4 - Somfigurator	157,50 €
9020579	Universal setup cable (five-wire) cable for - IO, RTS, WT, SSR-BIDI <b>NEU</b>	138,80 €

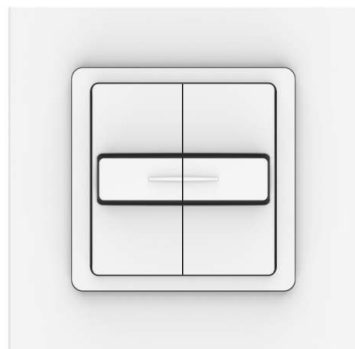
## IB WIRED CONTROL UNIT

<b>SWITCHES AND CONTROL UNITS</b>		
1811203	Smooove UNO IB + Pure shine	198,60 €
1811204	Smooove UNO IB + Silver shine	191,30 €
1811205	Smooove UNO IB + Black shine	191,30 €
1811272	Central switch Smooove Origin IB+	95,70 €

\* - Product available until in stock



Smooove UNO WT switch



Smooove DUO WT switch

# PRICE LIST OF MOTORS AND CONTROL UNITS

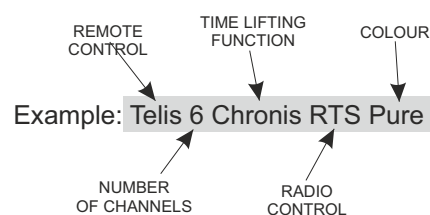


INDEX	NAME	PRICE IN Euro
<b>RTS RADIO CONTROL</b>		
<b>WALL-MOUNTED RTS TRANSMITTERS</b>		
1810881	Smoove 1 RTS Pure shine	67,60 €
1810882	Smoove 1 RTS Black shine	67,60 €
1810883	Smoove 1 RTS Silver shine	65,00 €
1811045	Smoove Origin RTS complete whit white frames *	48,60 €
1811361	Shutter in-wall RTS sender	105,60 €
<b>FRAMES FOR SMOOVE 1 RTS TRANSMITTERS</b>		
9015022	Smoove Pure frame	5,10 €
9015023	Smoove Black frame	12,30 €
9015238	Smoove Pure frame - double	9,50 €
<b>1-CHANNEL RTS REMOTES</b>		
1870403	Situo 1 RTS Pure II	55,20 €
<b>5-CHANNEL RTS REMOTES</b>		
1870419	Situo 5 RTS Pure II EE	85,70 €
1870423	Situo 5 RTS II Iron	110,80€
<b>16-CHANNEL RTS REMOTES</b>		
1811079	Telis 16 RTS Pure	202,10 €
1811080	Telis 16 RTS Silver	220,40 €
<b>RTS REMOTE CONTROLS WITH BUILT-IN TIMER</b>		
1805215	Telis 6 Chronis RTS Pure	253,50 €
1805216	Telis 6 Chronis RTS Silver	280,70 €
<b>SOLAR AUTOMATICS</b>		
9013075	Sunis WireFree RTS - autonomous solar sensor	370,90 €

\* - Product available until in stock

## The importance of symbols SOMFY

SYMBOL	DESCRIPTION
LS	automatic limit settings (adjusting screw)
LT	automatic limit settings (pushbutton)
NHK	emergency lifting mechanism
WT	wired control
RTS	radio control
UNO	1-motor control
DUO	2-motor control
CHRONIS	fixed-time roller shutter lifting function
SMART	basic version
COMFORT	advanced version
IB	low-voltage control
TE LIS	remote control





# PRICE LIST OF MOTORS AND CONTROL UNITS



INDEX	NAME	PRICE IN Euro
<b>IO - HOMECONTROL</b>		
<b>IO-HOMECONTROL - TaHoma &amp; Connexoon</b>		
1870594	TaHoma® Switch – central control unit io&RTS	393,00 €
<b>IO - HOMECONTROL - ø40 MOTORS FOR ROLLER SHUTTERS</b>		
<b>For proper operation, it is required to use blocking hangers</b>		
1030116	Oximo 40 io 4/16	296,90 €
1038015	Oximo 40 io 9/16	277,90 €
1039948	Oximo 40 io 13/10	391,60 €
<b>IO - HOMECONTROL - ø60 MOTORS FOR ROLLER SHUTTERS</b>		
<b>For proper operation, it is required to use blocking hangers</b>		
1032700	Oximo 50 io 6/17	242,30 €
1130334	Oximo S Auto io 6/17 - short - 375 mm *	270,40 €
1037686	Oximo 50 io 10/17	303,10 €
1039589	Oximo 50 io 15/17	270,40 €
1041627	Oximo 50 io 20/17	307,70 €
1045513	Oximo 50 io 30/17	429,20 €
1049605	Oximo 50 io 40/17	382,40 €
9014685	Adapter of SW 60 + short crown	14,10 €
<b>ILMO IO - Elektro-Funkmotoren MIT HINDERNISERKENNUNG "Plug &amp; Play"- Antriebsystem - für Oktogonalwelle 60 mm</b>		
<b>Zum richtigen Funktionieren werden die Hochschiebesicherung und der Anschlagstopper benötigt</b>		
1130558	Ilmo2 50 io 6/17 VVF 3m <b>NEU</b>	290,90 €
1130559	Ilmo2 50 io 10/17 VVF 3m <b>NEU</b>	318,20 €
1130560	Ilmo2 50 io 15/17 VVF 3m <b>NEU</b>	337,70 €
1130561	Ilmo2 50 io 20/17 VVF 3m <b>NEU</b>	370,30 €
<b>RS100 IO - Elektro-Funkmotoren ø60 für Rollläden mit Hindernis- und Vereisungserkennung sowie mit der Motordrehzahländerung</b>		
<b>Zum richtigen Funktionieren werden die Hochschiebesicherung</b>		
1033335	RS100 io 6/17 VVF 3m	331,00 €
1033336	RS100 io 10/17 VVF 3m	294,30 €
1033337	RS100 io 15/17 VVF 3m	309,10 €
1033338	RS100 io 20/17 VVF 3m	418,40 €
<b>RS100 IO &amp; WT - Elektro-Funkmotoren ø60 für Rollläden mit Hindernis-, Vereisungserkennung und der Motordrehzahländerung</b>		
<b>Steuerung per Funk und per leitungsgebundenen Wandschalter. Zum richtigen Funktionieren werden die Hochschiebesicherung</b>		
1033339	RS100 ioWT 6/17 VVF 2,5m - hybrid	279,60 €
1033340	RS100 ioWT 10/17 VVF 2,5m - hybrid	300,10 €
1033341	RS100 ioWT 15/17 VVF 2,5m - hybrid	320,80 €
1033342	RS100 ioWT 20/17 VVF 2,5m - hybrid	429,50 €
<b>OXIMO 40 WireFree IO - SOLAR-CELL POWERED AUTOMATIC RADIO DRIVES</b>		
1241054	Oximo 40 Solar IO 6/18 **	450,80 €
1241055	Oximo 40 Solar IO 10/12 **	475,90 €
9019219	Sonnenkollektor für Oximo WF	133,80 €
1782667	Y-cable for Oximo WF	12,30 €
9019791	Wall mount brackets for a new solar panel (a set of 2 pieces)	14,90 €
9019795	An additional battery for Oximo 40 Wirefree IO without housing	196,20 €
9021207	Ersatzakku für Oximo 40 Wirefree im Alu-Gehäuse	280,10 €
<b>IO-HOMECONTROL - ACCESORIES FOR TAHOMA BOX</b>		
1870848	THERMIS V2 WIREFREE io - temperature sensor for TaHoma box	169,10 €
1824035	SCENARIO PLAYER - control point allowing the user to start scenarios programmed in Tahoma	127,40 €
1875056	Öffnungssensor – weiß (Tür/Fenster)	221,70 €
1875057	Öffnungssensor – braun (Tür/Fenster)	231,30 €
1811483	Smoke sensor	298,90 €
1822492	USB-Schnittstelle für Z-WAVE	144,20 €

\* - their is no possibility of mounting the motor in roller shutters: SK-137, SK-150 as well as in roller shutter CC1000 - PSK-135

\*\* - solar panel, battery and curtain for self-assembly, extra charge for packing loose curtain not installed in the roller shutter  
€ 12.50 net/pc., net amount after discount. For proper operation, it is necessary to use a solar panel, Y-cable and battery for Oximo

# PRICE LIST OF MOTORS AND CONTROL UNITS



INDEX	NAME	PRICE IN Euro
<b>IO - HOMECONTROL</b>		
<b>COMPUTER PROGRAMMING DEVICE FOR IO-HOMECONTROL UNIT</b>		
9017035	Set&Go io	296,10 €
<b>IO - HOMECONTROL - NiNa group control remote controllers 2W</b>		
1811407	Nina Timer io - bidirektionale Touch-Display Steuerung mit Zeitautomatik	294,00 €
1805251	NiNa Centralization – individual and group control	282,00 €
<b>IO - HOMECONTROL - Group control remote controllers 1W</b>		
1870312	Situo 1 io Pure II *	55,20 €
1870316	Situo 1 io Iron II *	113,20 €
1870320	Situo 1 io Natural II *	113,20 €
1870324	Situo 1 io Arctic II *	113,20 €
1870328	Situo 5 io Pure II **	85,20 €
1870336	Situo 5 io Natural II **	109,00 €
1870340	Situo 5 io Arctic II **	148,10 €
1871280	Ysia 16 io Patio Pure <b>NEW</b>	210,60 €
1871290	Ysia 16 io Patio Antracyt <b>NEW</b>	210,60 €
<b>IO – HOMECONTROL - WETTERSENSOREN IO</b>		
1818285	Sunis WireFree II io - TaHoma Sonnensensor	139,00 €
<b>IO- HOMECONTROL - FUNKHANDSENDER IO 1W</b>		
1805228	Chronis io Pure - Wochentimer	171,70 €
<b>IO – HOMECONTROL - FUNKWANDSENDER FÜR DIE VOR-ORT-BEDIENUNG 1W</b>		
1811066	Smooove Origin io, mit Rahmen Pure	58,70 €
1811003	Smooove 1 io Pure Shine	69,10 €
1811005	Smooove 1 io Black Shine	78,00 €
1811007	Smooove 1 io Silver Shine	111,60 €
1811013	Smooove 1 A/M Pure Shine	77,20 €
1811014	Smooove 1 A/M Silver Shine	111,60 €
1811015	Smooove 1 A/M Black Shine	111,60 €
<b>IO-HOMECONTROL - FUNKWANDSENDER 1W SMOOVE RS100 IO</b>		
1811316	Smooove RS100 io Black Shine /ohne Rahmen/	79,80 €
1871105	Ami 1 RS100 io mit Rahmen	107,00 €
<b>IO – HOMECONTROL - RAHMEN FÜR FUNKWANDSENDER SMOOVE 1 IO</b>		
9015022	Smooove Rahmen Pure	5,10 €
9015023	Smooove Rahmen Black	12,30 €
9015238	Smooove Rahmen Pure - doppel	9,50 €
<b>IO – HOMECONTROL - WEITERE STEUERUNGEN</b>		
1822611	Funkempfänger für Beleuchtung, WHITE LED Receiver io, mit Dimmer, 4 Kanäle zum Anschluss von LED-Dioden	267,20 €
1822612	Funkempfänger für Beleuchtung- RGB LED Receiver io, mit Dimmer, 3 Kanäle zum Anschluss von RGB-Dioden + ein Kanal zum Anschluss von White-Dioden	287,00 €
1822613	Funkempfänger für Beleuchtung, TUNABLE WHITE LED Receiver io, mit Dimmer, 2 Kanäle zum Anschluss von LED-Dioden	287,00 €
1822617	Funkempfänger Plug io ON/OFF Typ E	126,60 €
1811583	Funkempfänger Smooove Uno io Pure mit Rahmen	271,40 €
9014069	Repeater II io	1301,80 €
<b>IO - HOMECONTROL - Funkempfänger, Funkhandsender IZYMO io</b>		
1822649	IZYMO ON-OFF receiver io	166,20 €
1822660	IZYMO shutter receiver io	146,80 €
1822609	IZYMO transmitter io	114,80 €

\* - Device replaces previous Situo 1 io remotes

\*\* - Device replaces previous Situo 5 io remotes

# TUBULAR MOTORS FOR ROLLER SHUTTERS



	Motor power ( Nm )	Roller shutter hoisting capacity			Minimum roller shutter widths	
		ø60			External roller shutters	Top-mounted roller shutters
		up to 1,5 m + WB	up to 2,5 m + WB	up to 3,5 m + WB		
<b>Oximo io 6/17</b>	6 Nm	11 kg	10 kg	9 kg	83 cm	78 cm **
<b>Oximo S Auto io 6/17</b>	6 Nm	11 kg	10 kg	9 kg	59 cm (41 - 47 cm )*	54 cm ** (44 - 50 cm)*
<b>Oximo io 10/17</b>	10 Nm	19 kg	18 kg	16 kg	88 cm	83 cm **
<b>Oximo io 15/17</b>	15 Nm	28 kg	28 kg	24 kg	88 cm	83 cm **
<b>Oximo io 20/17</b>	20 Nm	38 kg	37 kg	34 kg	88 cm	83 cm **
<b>Oximo io 30/17</b>	30 Nm	57 kg	55 kg	51 kg	90 cm	85 cm **
<b>Oximo io 40/17</b>	40 Nm	75 kg	75 kg	68 kg	97 cm	92 cm **

\* - cap for SW60 + very short pipe crown (art. 9 014 685)

\*\* - minimum width using RKS mounting

## EXAMPLE:

A roller shutter with profile PA-39 mm has the dimensions of 230 cm × 250 cm. It means that the surface of the profile is 5,75 m<sup>2</sup>. This value should be multiplied by the weight of 1 square meter of profile PA39 mm, which is 2.8 kg (5,75 × 2.8 kg=16,1 kg). The height of roller shutter is above 1,5 m, for pipe ø 60, motor Oximo io 10/17 should be chosen.

**CAUTION!** When choosing a motor you should remember about the weight of 1 m<sup>2</sup> of the profile, which is indicated below:

**PA-39 mm\*:** 2,8 kg/m<sup>2</sup>

**PA-45 mm:** 2,9 kg/m<sup>2</sup>

**PA-52 mm:** 3,0 kg/m<sup>2</sup>

+ 10 % safety stock

\* + 0 % safety stock

**CAUTION!** The manuals for connecting the motors to power supply are included in the assembly and 'operating instructions for the tubular motor' and section (only qualified and authorized electricians may carry out the connections).

When mounting the radio motors with electronic or mechanical limit system, in accordance with current standards the voltage 230V 50 Hz is required. In the case of deviations from these values, we recommend to use components for overvoltage protection B-C, and D.

Minimum width of the mosquito net	500 mm
Maximum width of the mosquito net	2400 mm
Maximum width of the double mosquito net	3600 mm
Minimum height of the mosquito net	1900 mm
Maximum height of the mosquito net	2600 mm

### STANDARD EQUIPMENT

Colour of the mosquito net profile: silver(01), white(02), grey(03), beige(05), dark brown(08), brown(09), ivory(16), anthracite grey (23) \*

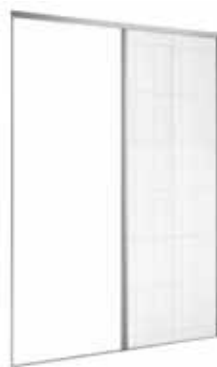
Net colour black

### EXTRA CHARGE

NAME	PRICE
Varnishing of mosquito net profiles	
- colours of the basic colour palette ZF3000	5%
- colour palette for roller shutters - dark beige (04), light grey (07), green (13), cream white (15), claret (19), black (20), steel olive (26), basalt grey (27)	5%
- other RAL colours **	10%

\* - basic colour palette available for PORTOS catalogue roller shutters

\*\* - order fulfilment up to 21 business days



**Pleated mosquito net  
Single**



**Pleated mosquito net  
Double**

*Measurements are taken by measuring the width and height of the window recess at least in three points. If the measurements differ in several points, in the order - state the lowest value.*

		SINGLE PLEATED MOSQUITO NET - INTEGRATED			
width height	width	500-1200	1201-1500	1501-1800	1801-2400
	1900-2200		449	476	493
2201-2600		480	511	532	610

		DOUBLE PLEATED MOSQUITO NET - INTEGRATED						
width height	width	500-1200	1201-1500	1501-1800	1801-2400	2401-2500	2501-3000	3001-3600
	1900-2200		691	695	699	737	739	800
2201-2600		709	712	717	755	756	817	861

		SINGLE PLEATED MOSQUITO NET - INDEPENDENT			
width height	width	500-1200	1201-1500	1501-1800	1801-2400
	1900-2200		501	529	549
2201-2600		537	569	593	675

		DOUBLE PLEATED MOSQUITO NET - INDEPENDENT						
width height	width	500-1200	1201-1500	1501-1800	1801-2400	2401-2500	2501-3000	3001-3600
	1900-2200		743	748	755	797	799	864
2201-2600		765	771	778	820	822	886	934

# USE AND MAINTENANCE OF ROLLER SHUTTERS

Roller shutters and their components have been specially designed to prevent any permanent deformations, at the assumption that they are used in compliance with the intended purpose.

Respective manufacturer's recommendations must be observed at all times when the roller shutters are in use.

Roller shutters are suitable for use in temperatures ranging from -25°C to +45°C.

Roller shutters shall not be used when the profile is ice-covered.

In case of strong wind, roller shutters should be either completely open or closed. Windows must be closed or otherwise the roller shutter profiles might be torn out of the guides.

Roller shutters must not be continuously driven with an electric motor for longer than 4 minutes.

When roller shutters are moving (opening or closing), no objects or persons shall be located directly underneath the slats or otherwise proper operation of the roller shutters might be impeded. After full opening of the roller shutter, the end slat with gasket should always be positioned in the side rails.

The following equipment is used to close and open the roller shutters: electromechanical drives equipped with an emergency lifting mechanism (crank with a hook that is provided together with the shutter, which should be used only for emergency opening of the shutters, it is not allowed to use the crank as the main drive), manual drives such as belts, cords, universal couplings with a crank, spring mechanism rolling up the roller shutter curtain.

To prevent any curtain blocking when it is closing (e.g. due to the condition left after the house construction), all dirt in the brush seals installed in the side rails of the front mounted roller shutters must be removed. Users should also e.g. fully open and close their roller shutters at least 8 times a month.

Inspection and maintenance works should be performed at least once in every 3 months in compliance with these instructions. Users may perform basic maintenance works, for which no special licences are required. Such maintenance works shall in particular include: removal of fine sand and other dirt from the curtain and rails as they may scratch the shutter elements or e.g. a visual inspection of the general condition of the roller shutter, inspection in view of any missing parts or efficient operation of all the structural elements.

In case of roller shutters with rolled mosquito nets, net slides in the side rails should be cleaned at least once a month. Failure to observe the guidelines may result in improper net closing and may slow down the full opening of the net.

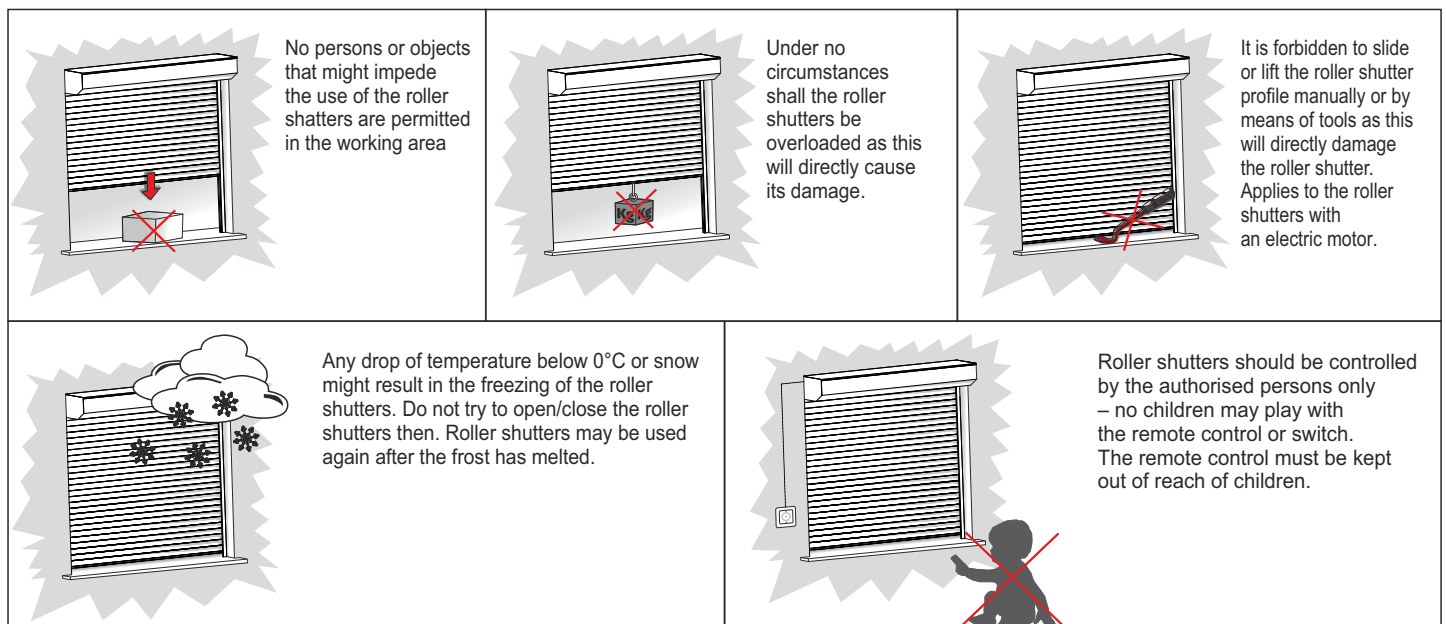
When performing maintenance works, the following must be observed:

1. Maintenance works must be carried out when the front mounted roller shutters are immobilised, it is best to disconnect them from power supply for the duration of maintenance works.
2. Sharp or abrasive cleaning tools shall be avoided.
3. Lukewarm water and mild neutral detergents, preferably at the temperatures no lower than +10°C, shall be used for the cleaning of the roller shutter surface.

**NOTE - detergents and corrosive substances may damage or discolour the coating.**

*Any damage caused as a result of weather conditions or normal wear and tear may not be complained about. Wear and tear of the curtain coating demonstrated via minor scratches appearing after approx. 300 cycles of regular use is classified as normal wear and tear.*

In case of any individual re-design of the electrically driven roller shutters, it is necessary to adjust the limit switches. The number of slats in the profile might also require adjustment.



# ALUMINIUM PROFILE PA-39

# ALUMINIUM PROFILE PA-45

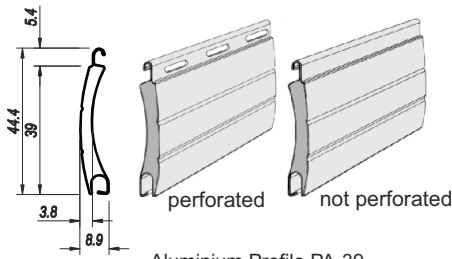
# ALUMINIUM PROFILE PA-52

## DESCRIPTION

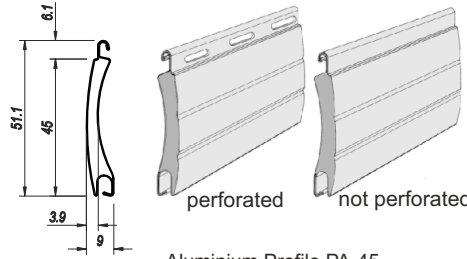
Profile's height:	39 mm
Q-ty of slats per 1m height:	26 pcs.
Max. width:	2500 mm
Max. curtain surface:	6,5 m <sup>2</sup>
Weight per 1 m <sup>2</sup> :	2,8 kg

Profile's height:	45 mm
Q-ty of slats per 1m height:	23 pcs.
Max. width:	3000 mm
Max. curtain surface:	6,5 m <sup>2</sup>
Weight per 1 m <sup>2</sup> :	2,9 kg

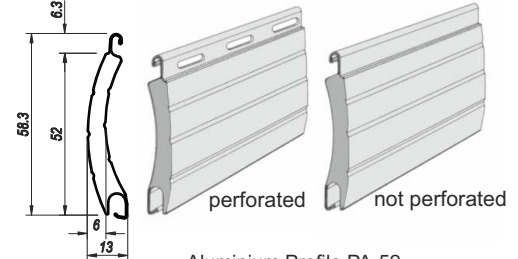
Profile's height:	52 mm
Q-ty of slats per 1m height:	19 pcs.
Max. width:	3700 mm
Max. curtain surface:	8,0 m <sup>2</sup>
Weight per 1 m <sup>2</sup> :	3,0 kg



Aluminium Profile PA-39  
Available colours – 23



Aluminium Profile PA-45  
Available colours – 19



Aluminium Profile PA-52  
Available colours – 13



**Texture of Colours** – golden oak, walnut, winchester, mahogany, wenge, woodec turner oak – may be different. The Portos Company will not consider a complaint from this reasons.

**NOTE** - the colour samples presented above can to some extent vary from the actual colours.



